

**APPLICATION**

- ▶ Cantilever is a high quality, robust and heavy duty system for sliding metal gates.
- ▶ Cantilever is suitable for industrial and commercial use.
- ▶ It is ideal for security and traffic control and is designed for use where the road surface may be uneven or where the roadway has to be free of rails and channels.
- ▶ Due to its construction Cantilever offers security and maximum weather protection as the rollers are located internally within the track.

**GATE SPECIFICATION**

<b>Track System:</b>	<b>Cantilever 550</b>	<b>Cantilever 1000</b>
	<b>Motorised</b>	<b>Manual</b>
Max Gate Width	10m	10m
Max Gate Weight	550kg	1000kg
Gate Thickness	80-200mm	80-200mm

Gates should be fabricated from welded steel section.

Track should be welded to the bottom rail of the gate.

Side clearance should be great enough to allow for the clear opening width plus the required overhang length of the gate (refer to chart overleaf).

Rollers should be mounted on substantial concrete footings, minimum width of 500mm and depth of 800mm and spaced as far apart as possible allowing for two end rollers 701, requiring 130mm each.

**HARDWARE SPECIFICATION**

**Top Guide Roller (2 per gate):** 703 Side wall fitting  
Top Guide steel in zinc dichromate finish.

**Track:** 700 (5mm thick) or 710 (7mm thick)  
**Material:** Steel, zinc plated  
**Standard length:** 6000mm

**End Guides (2 per gate):** 702 or 712 (refer to chart overleaf)  
End Guides steel in zinc dichromate finish.

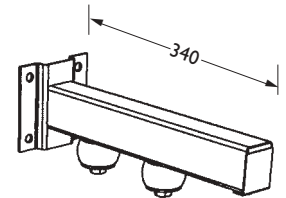
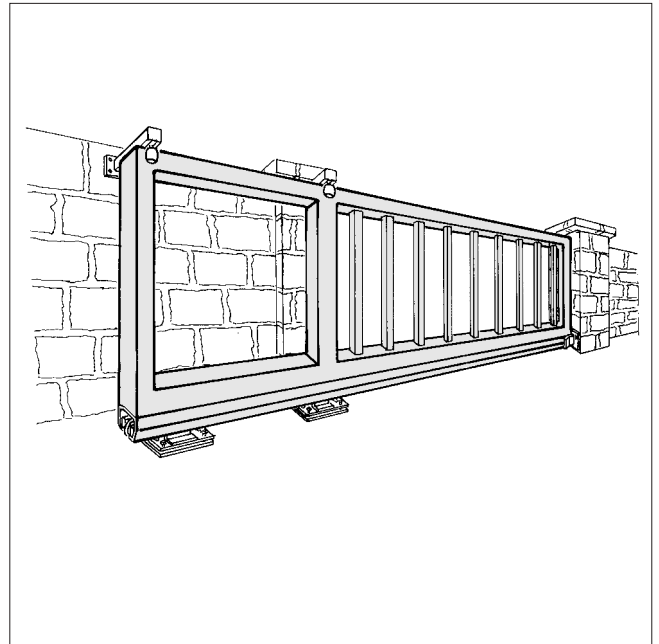
**End Roller (2 per gate):** 701  
End Roller steel in zinc dichromate finish.

**Bottom Rollers (2 per gate):** 704, 708 or 718 (refer to chart overleaf)  
Bottom Rollers steel in zinc dichromate finish.

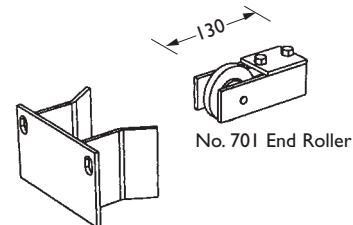
**CHOOSING YOUR GATE HARDWARE**

Refer to chart overleaf.

Please note that the Track forms part of the estimated gate weight. Allow 6.0kg/m for No. 700 Track and 6.8kg/m for No. 710 Track.

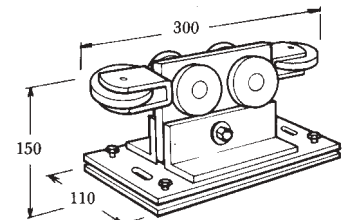


No. 703 Top Guide Roller

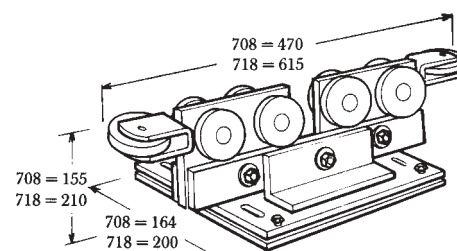


No. 701 End Roller

No. 702 or No. 712 End Guide



No. 704 Bottom Roller



No. 708 or No. 718 Bottom Rollers

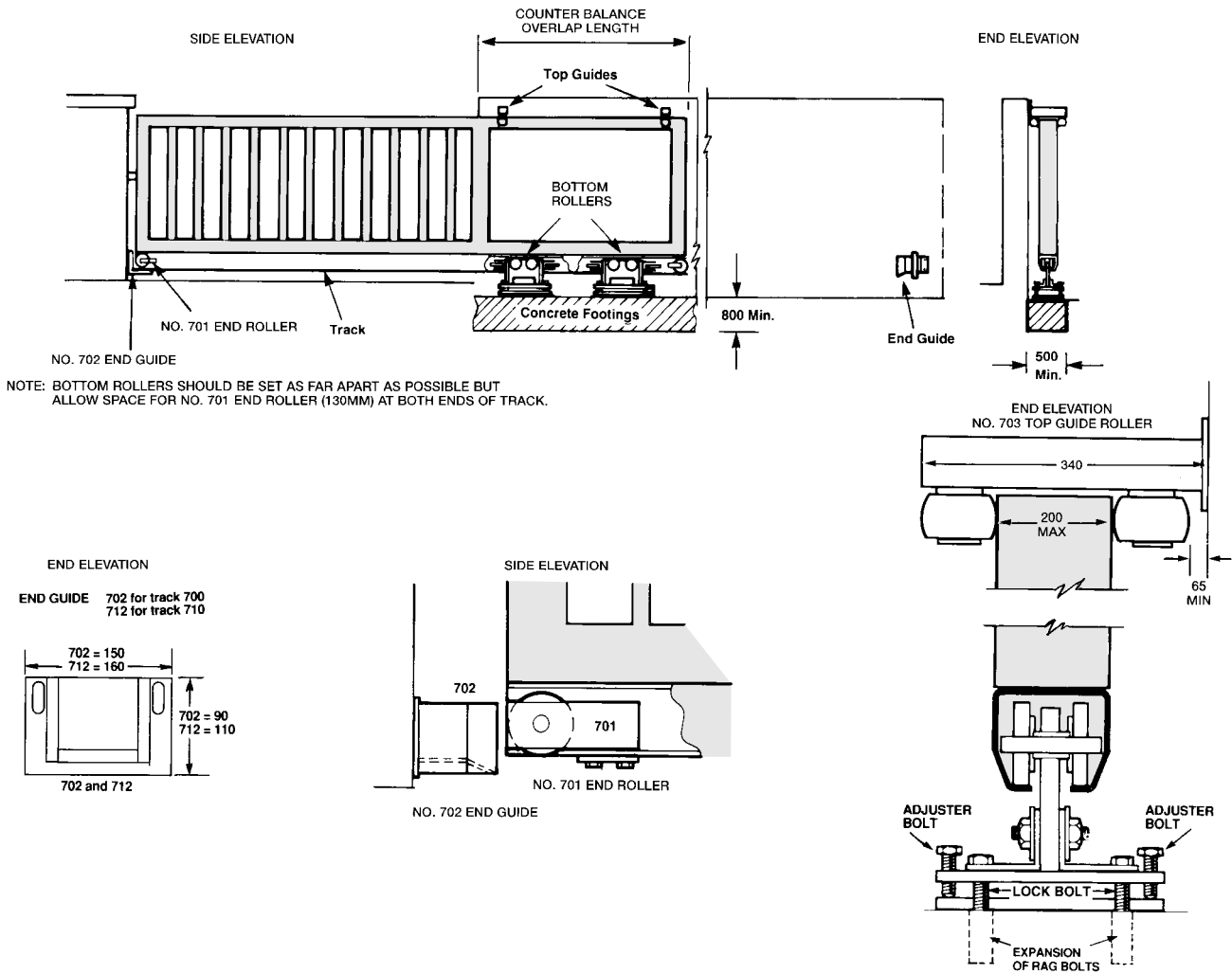
# Cantilever 550 & 1000

FOR METAL GATES, MAX. 1000kg

# HENDERSON®

SLIDING & FOLDING DOOR HARDWARE

AUSTRALIA'S WIDEST RANGE



## CHOOSING YOUR GATE HARDWARE

Refer to tables below and choose gate type, manual or motorised. Read across to required gate opening width, then read downward to estimated gate weight. The intersecting figure in the box shows the length in metres of the counter balance overlap – see side elevation above. The colour of the box indicates the hardware required, as shown below.

- Use 2 Rollers No. 704, Track No. 700 and 2 End Guides No. 702
- Use 2 Rollers No. 708, Track No. 700 and 2 End Guides No. 702
- Use 2 Rollers No. 718, Track No.710 and 2 End Guides No. 712

**MANUAL**

COUNTER BALANCE OVERLAP LENGTH IN METRES IS SHOWN IN THE BOXES BELOW

ESTIMATED GATE WEIGHT	2	2.5	3	3.5	4	4.5	5	5.5	6	6.5	7	7.5	8	8.5	9	9.5	10
200kg	1.7	1.7	1.7	1.8	1.9	2.0	2.1	2.3	2.4	1.7	1.7	1.7	1.8	1.9	1.9	2.0	2.0
300kg	2.1	2.3	2.6	2.8	3.1	3.3	3.6	3.8	4.1	2.2	2.3	2.5	2.6	2.7	2.8	2.9	3.0
400kg			1.8	2.0	2.2	2.4	2.6	2.8	2.9	3.1	3.3	3.4	3.6	3.8	3.9	4.1	4.3
500kg				3.1	3.3	3.6	3.8	4.1	4.3	4.6	4.6	2.1	2.2	2.2	2.3	2.4	2.5
600kg							2.1	2.1	2.1	2.2	2.4	2.5	2.6	2.7	2.8	2.9	3.0
700kg							2.2	2.4	2.5	2.6	2.8	2.9	3.0	3.2	3.3	3.5	3.6
800kg							2.6	2.8	2.9	3.1	3.3	3.4	3.6	3.8	3.9	4.1	4.3
900kg							3.0	3.2	3.4	3.7	3.9	4.1	4.3	4.5	4.7		
1000kg							3.6	3.8	4.0	4.3	4.6						

**MOTORISED**

ESTIMATED GATE WEIGHT	2	2.5	3	3.5	4	4.5	5	5.5	6	6.5	7	7.5	8	8.5	9	9.5	10
100kg	1.7	1.7	1.7	1.7	1.7	1.7	1.8	1.9	2.0								
150kg	1.7	1.9	2.1	2.3	2.5	2.7	2.8	3.0	3.2								
200kg	2.5	2.8	3.2	3.5	3.8	4.2	4.5	4.8	5.2	1.7	1.7	1.7	1.8	1.9	1.9	2.0	2.0
250kg	2.1	2.4	2.7	3.0	3.2	3.5	3.8	4.1	4.3	1.9	2.0	2.1	2.2	2.3	2.3	2.4	2.5
300kg	2.7	3.1	3.5	3.9	4.2	4.6	5.0	5.4	5.7	2.3	2.4	2.5	2.6	2.7	2.8	2.9	3.0
350kg						2.1	2.2	2.4	2.5	2.6	2.8	2.9	3.0	3.2	3.3	3.5	3.6
400kg						2.4	2.6	2.8	2.9	3.1	3.3	3.4	3.6	3.8	3.9	4.1	4.3
450kg						2.8	3.0	3.2	3.5	3.7	3.9	4.1	4.3	4.5	4.7		
500kg						3.3	3.6	3.8	4.1	4.3	4.6						
550kg						3.9	4.2	4.5	4.8								

C130B

## HENDERSON RMD

Door Hardware Division of  
RMD PRESS CO. PTY LTD.

ACN 004 313 937

© COPYRIGHT HENDERSON RMD

© HENDERSON IS A REGISTERED TRADEMARK OF PC HENDERSON LTD (UK)



SALES OFFICES IN ALL STATES