

Locking and Bolting

FOR STRAIGHT SLIDING INDUSTRIAL DOORS

HENDERSON[®]

SLIDING & FOLDING DOOR HARDWARE

AUSTRALIA'S WIDEST RANGE

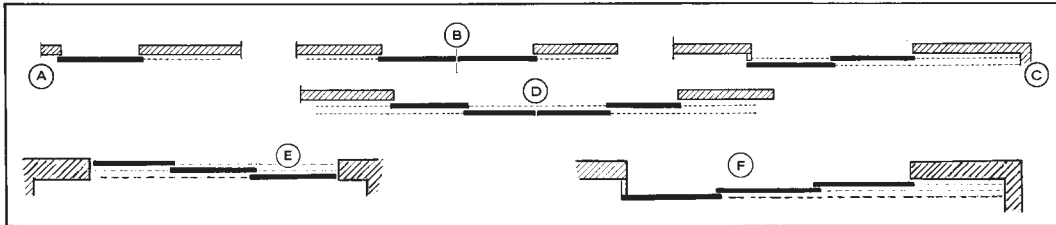
EXAMPLES OF LOCKING AND BOLTING

The following examples show the appropriate locking bolts, locking bars, surface bolts or flush bolts to specify for various applications. The 994S Locking Bolt, plus 430 and 431 Locking Bars are designed for use with a padlock (to be supplied by others).

The other hardware referred to below is the 994 Surface Bolt, the 77J Flush Bolt (for framed doors with a bottom rail up to 152 x 48), the 77S Flush Bolt (for framed doors with a bottom rail up to 230 x 70) and the 78 Flush Bolt for flush doors.

For a door weighing up to 800kg, specify 463 Bow Handles on doors using 994 or 994S Surface Bolts and specify 414 Flush Pulls on doors using Flush Bolts. For a door exceeding 800kg specify 464 Bow Handles instead of 463 and specify 413 Flush Pulls instead of 414.

An access door within a sliding door (as shown on illustrations 1 to 13) often simplifies locking arrangements. The sliding door can be bolted on the inside and the access door locked from the outside using an appropriate lock.

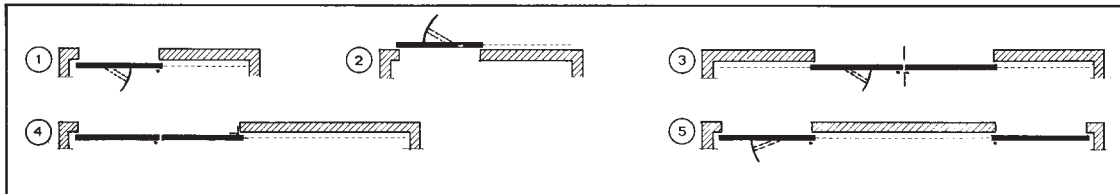


Ref.	Doors sliding inside or outside	Door locking inside or outside	Hardware for doors requiring to be locked	Doors bolting only on inside	Ref.	Doors sliding inside or outside	Door locking inside or outside	Hardware for doors requiring to be locked	Doors bolting only on inside
A	Inside	Inside Outside	1 x 994S 1 x 430	1 x 994	D	Inside	Inside Outside	2 x 77 or 78, 1 x 994S 2 x 77 or 78, 1 x 994 and 1 x 430	2 x 994 and 2 x 77 or 78
	Outside	Inside Outside	1 x 430 1 x 431	1 x 77 or 78		Outside	Inside Outside	3 x 77 or 78, 1 x 430 3 x 77 or 78, 1 x 431	4 x 77 or 78
B	Inside	Inside Outside	1 x 994S 1 x 994, 1 x 430	2 x 994	E	Not Applicable	Inside	2 x 77 or 78, 1 x 994S alternatively 2 x 77 or 78, 1 x 431	1 x 994 and 2 x 77 or 78
	Outside	Inside Outside	1 x 77 or 78, 1 x 430 1 x 77 or 78, 1 x 431	2 x 77 or 78		Not Applicable	Outside	2 x 77 or 78, 1 x 430 alternatively 1 x 77 or 78, 1 x 994, 1 x 431	1 x 994 and 2 x 77 or 78
C	Inside	Inside Outside	1 x 994, 1 x 430	1 x 994 and 1 x 77 or 78	F	Inside	Inside Outside	1 x 77 or 78, 1 x 994 and 1 x 430	1 x 994 and 2 x 77 or 78
	Outside	Inside Outside	1 x 77 or 78 and 1 x 430	2 x 77 or 78		Outside	Inside Outside	2 x 77 or 78 and 1 x 430	3 x 77 or 78

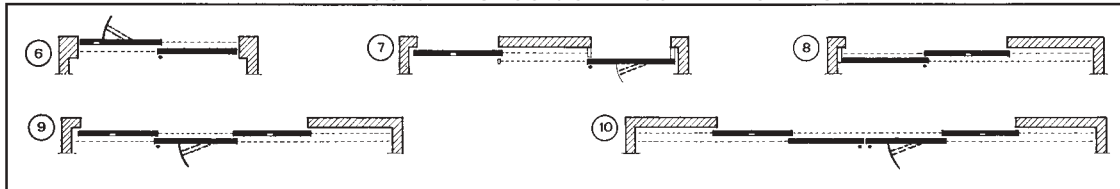
EXAMPLES OF SLIDING DOORS

Openings can be covered by a single door or by a series of doors, sliding in single, double or triple lines. The following examples cover almost any condition and will be helpful to determine the best way to cover the opening.

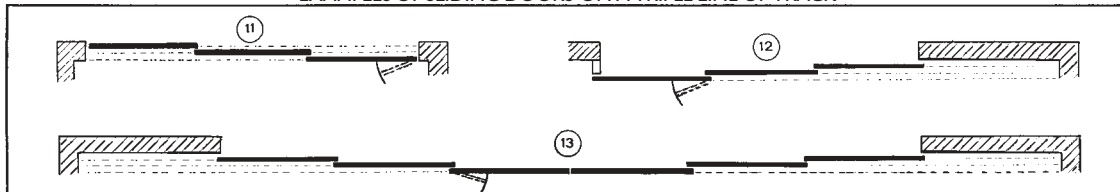
EXAMPLES OF SLIDING DOORS ON A SINGLE LINE OF TRACK



EXAMPLES OF SLIDING DOORS ON A DOUBLE LINE OF TRACK



EXAMPLES OF SLIDING DOORS ON A TRIPLE LINE OF TRACK



C70B

HENDERSON RMD

Door Hardware Division of
RMD PRESS CO. PTY LTD.
ACN 004 313 937

© COPYRIGHT HENDERSON RMD

© HENDERSON IS A REGISTERED TRADEMARK OF PC HENDERSON LTD (UK)



SALES
OFFICES
IN ALL
STATES