

APPLICATION

- Suitable for interior sliding timber doors to cupboards, bookcases, built-in furniture and other good quality cabinet work where a quiet, smooth action is required.
- Any opening width may be accommodated and doors can slide on single or multiple lines of rails.

DOOR SPECIFICATION

Rail System: Timberoll 25

For Individual Doors:

Max Door Weight	25kg
Max Door Width	900mm
Min Door Thickness	16mm

Timber framed glazed or flush doors or doors made from medium density fibreboard (MDF). It is essential that the bottom rail of timber framed doors is of sufficient size to accommodate the bottom rollers.

STANDARD SETS

Standard sets are available for bi-passing or bi-parting doors. Sets comprise two top guide channels, two bottom rails, four top guides, four 84N bottom rollers, all screws and installation instructions.

Set No.	Opening width
TR4	1200mm for 2 doors
TR5	1500mm for 2 doors
TR6	1800mm for 2 doors

HARDWARE SPECIFICATION

Top Guide Channel:	81
Bottom Rail:	80
Material	Aluminium
Finish	Mill
Standard lengths	1200mm, 1500mm, 1800mm, 2400mm and 3600mm

Top Guide: 113N/81

The top guides are made from nylon and are designed to fit into the top ends of each door and to slide in the 81 channel.

Bottom Roller: 84N

These bottom rollers are designed only for recessing into the back of the door. They are slightly thinner than the 82N bottom roller and have more screw contact in the door. They are made with a nylon wheel housed in a zinc plated steel body.

Alternative Hardware:

Bottom Roller: 82N

The bottom roller is made with a stainless steel axle and a nylon wheel housed in a nylon body. The bottom roller can either be mortised into the bottom of the door or recessed into the back of the door. Minimum door thickness 19mm.

Retractable Guide: 114RN

This guide has a retractable nylon roller fitted on a steel body, zinc plated. The roller runs in a 10mm x 10mm recess grooved in the timber head of the cupboard.

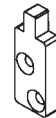
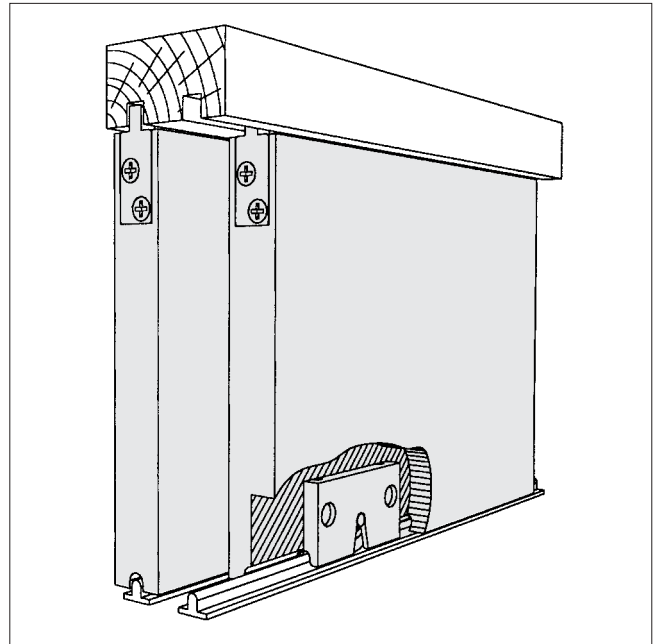
Accessories:

Door Stop: 28N

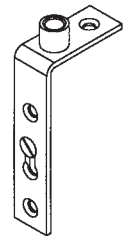
The door stop is made of nylon. On bi-passing doors one is fitted on the back face of the front door.

Finger Pull: 26

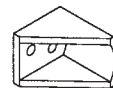
Finger pull, chrome plated brass. Push-fit into 32mm diameter by 10mm deep recess.



No. 113N/81 Top Guide – supplied in sets



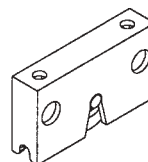
No. 114RN Retractable Guide – optional



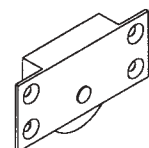
No. 28N Door Stop – optional



No. 26 Finger Pull – optional



No. 82N Bottom Roller – optional



No. 84N Bottom Roller – supplied in sets

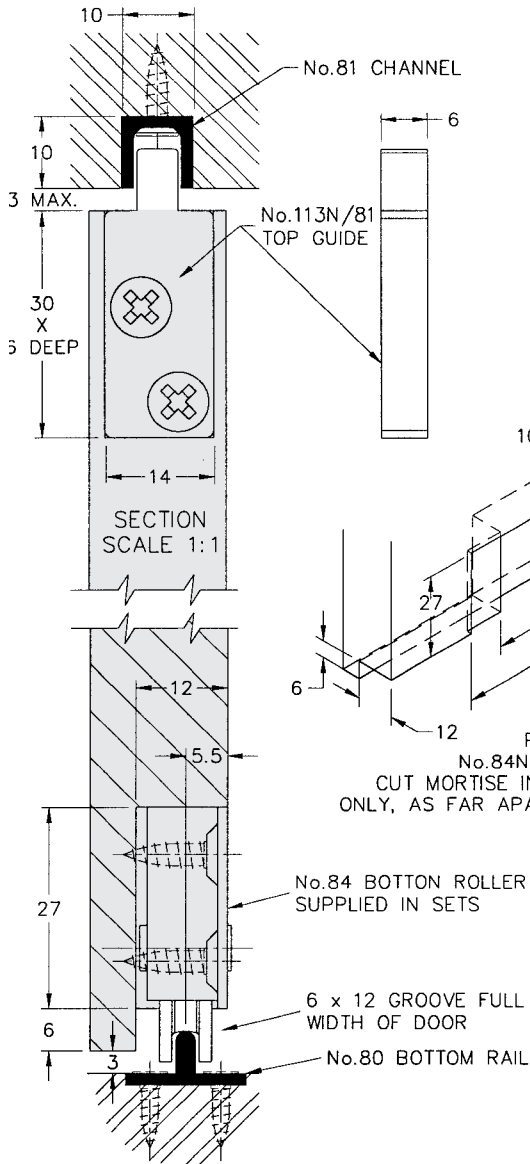
Timberoll 25

FOR BOTTOM ROLLER SLIDING CUPBOARD DOORS, MAX. 25kg EACH

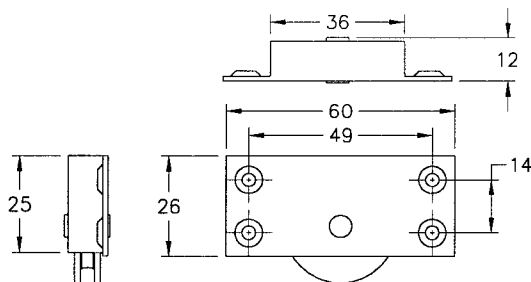
HENDERSON®

SLIDING & FOLDING DOOR HARDWARE

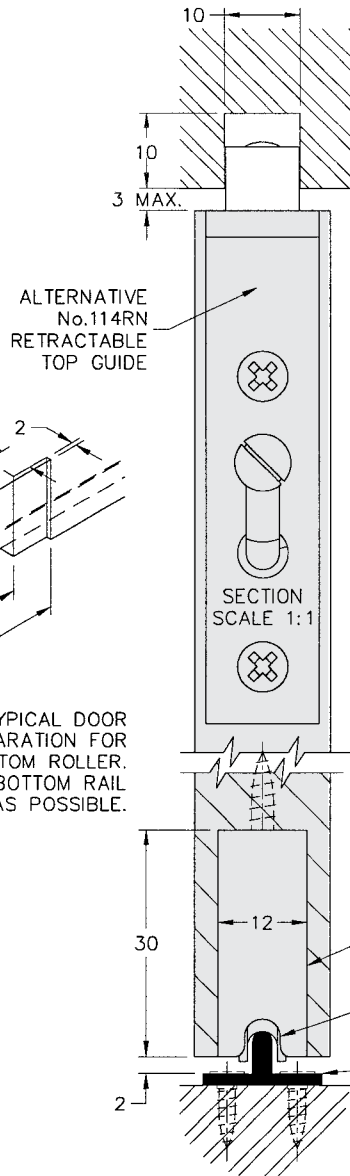
AUSTRALIA'S WIDEST RANGE



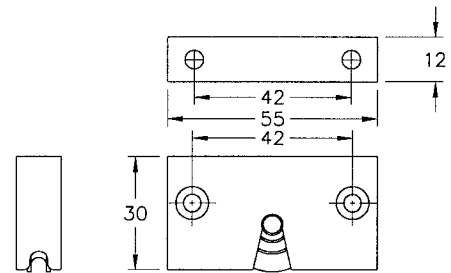
No.84N BOTTOM ROLLER – SUPPLIED IN SETS



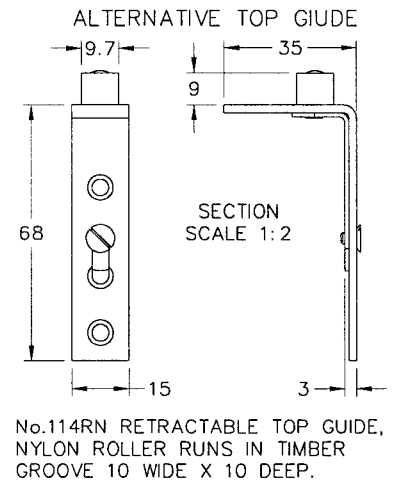
SUITABLE FOR RECESSING INTO THE BACK OF THE DOOR. MINIMUM DOOR THICKNESS 18mm.



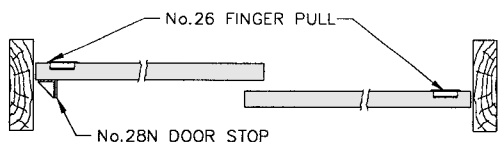
No.82N ALTERNATIVE BOTTOM ROLLER



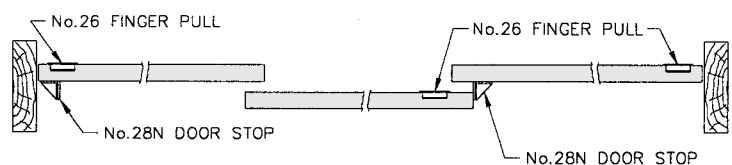
SUITABLE FOR MORTISING INTO THE BOTTOM OF A DOOR (MINIMUM THICKNESS 18) OR RECESSING INTO THE BACK OF THE DOOR (MINIMUM THICKNESS 24)



No.114RN RETRACTABLE TOP GUIDE, NYLON ROLLER RUNS IN TIMBER GROOVE 10 WIDE X 10 DEEP.



INSIDE
2 DOOR APPLICATION



INSIDE
3 DOOR APPLICATION

C40B

HENDERSON RMD

Door Hardware Division of
RMD PRESS CO. PTY LTD.

ACN 004 313 937

© COPYRIGHT HENDERSON RMD

© HENDERSON IS A REGISTERED TRADEMARK OF PC HENDERSON LTD (UK)



SALES OFFICES IN ALL STATES