

**APPLICATION**

- ▶ For interior and exterior applications.
- ▶ This quality bottom roller hardware is ideally suited to high class joinery installations.
- ▶ Designed for heavy straight sliding partitions, fully glazed patio or showroom doors. Also suitable for flush or panelled doors.
- ▶ The bottom roller design is suited to applications where the supporting structure or lintel is insufficient for the weight of the door or where headroom is limited.
- ▶ To cover width of opening, any number of doors can be used on single or multiple lines of rail.
- ▶ To accommodate different building designs, doors can slide to one or both sides.
- ▶ Where doors are fitted externally, a canopy is recommended to protect the top guide channel, brackets and top guide rollers.

**DOOR SPECIFICATION**

**Rail System:** Timberoll 270

For Individual Doors:

Max Door Height 3300mm  
Max Door Weight 270kg  
Min Door Thickness 44mm

Doors must be constructed with bottom rails of at least 175mm depth to accommodate the concealed, mortised, bottom rollers.

Door weight is carried on the floor permitting the use of a light overhead structure.

**HARDWARE SPECIFICATION**

**Top Guide Channel:** 900 with safety lip  
Material Galvanised steel  
Standard lengths 2000mm, 3000mm and 4000mm

**Top Guide Brackets:**  
For single line - face fitted 1/900 Pressed steel zinc plated  
For single line - soffit fitted 3/900 Pressed steel zinc plated  
For double line - face fitted 5/900 Pressed steel zinc plated  
Fit at 900mm maximum centres.

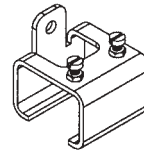
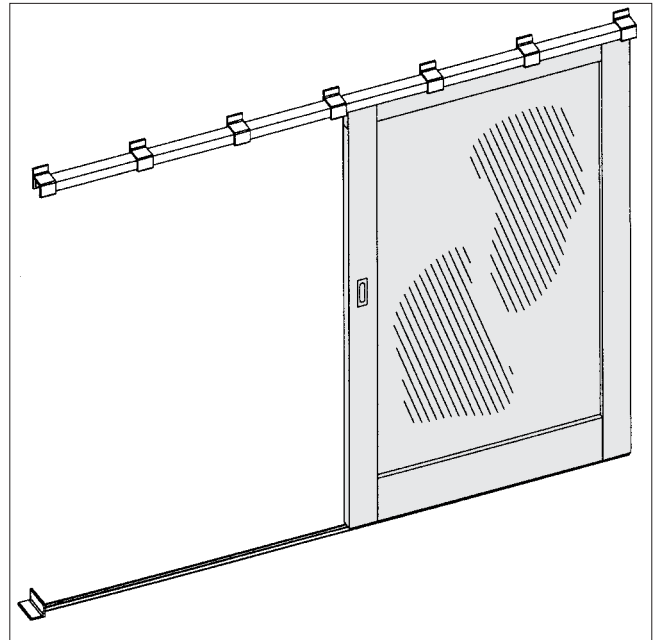
**Top Guide Rollers (2 per door):** 203/900  
Top guide rollers have double adjustable anti-rattle nylon rollers. Steel components zinc plated.

**Bottom Rollers (2 per door):** 916  
916 has brass roller with maintenance free roller bearing. Body aluminium die casting.

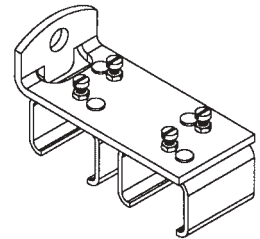
**Bottom Rails:** 817 Brass  
917 Brass

Standard lengths  
817 available in 2000mm, 3000mm and 5000mm lengths.  
917 available in 2000mm, 3000mm and 4000mm lengths.  
917 is drilled and countersunk for screwing to timber floor or for attaching to lugs 917L when installing in concrete floor.

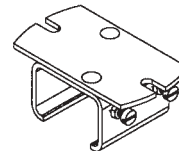
**Accessories:** Flush Pulls and Flush Bolts in clear anodised aluminium, with 110SC  
Door Stop in satin chrome on brass.  
Sponge neoprene seal.



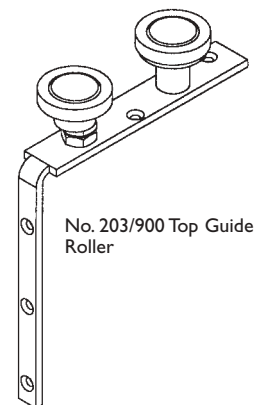
No. 1/900 Bracket



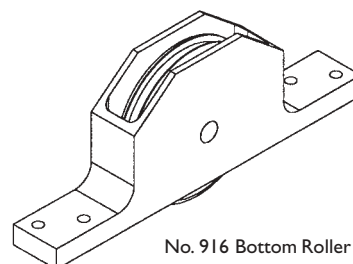
No. 5/900 Bracket



No. 3/900 Bracket



No. 203/900 Top Guide Roller



No. 916 Bottom Roller

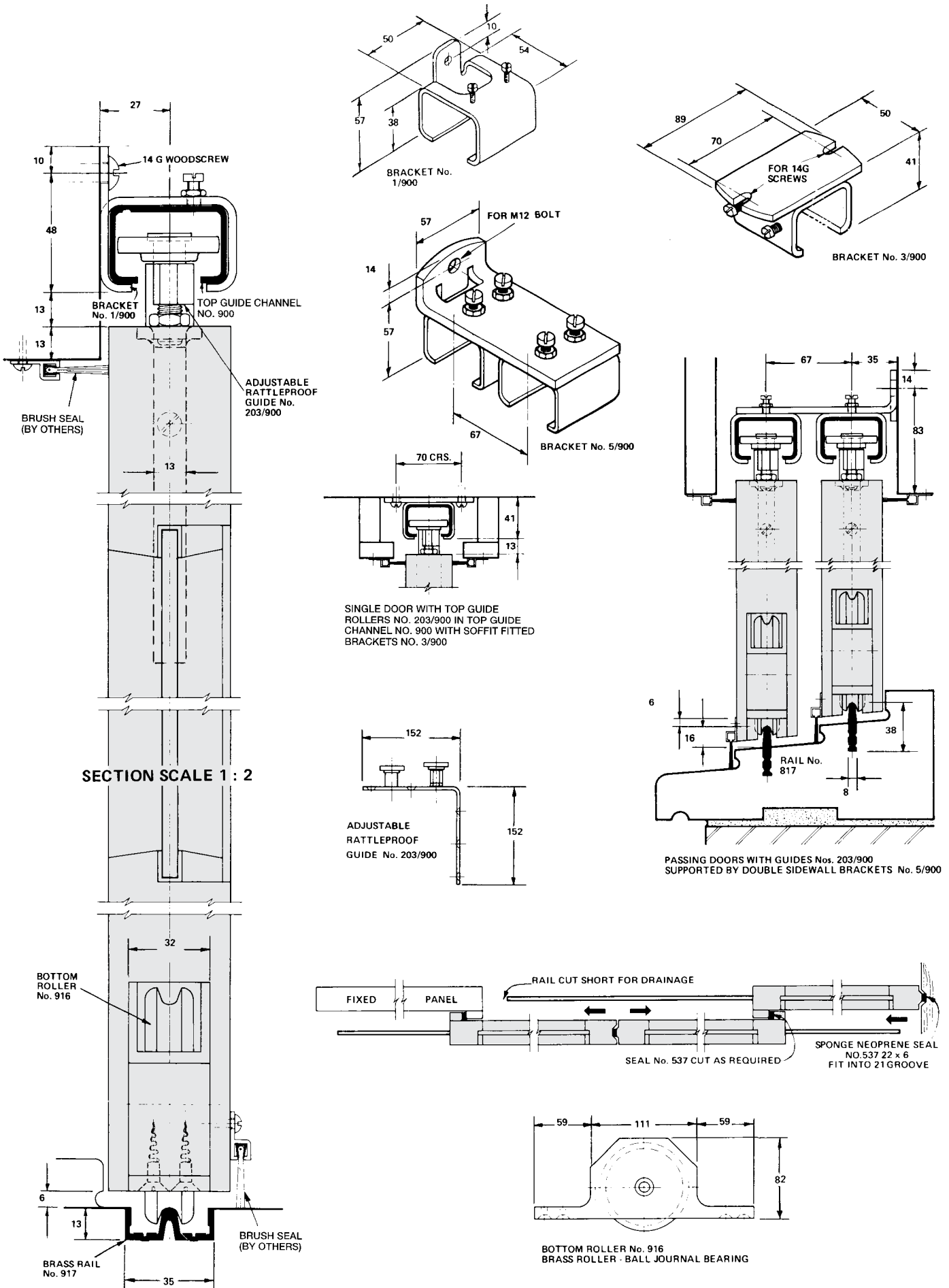
# Timberoll 270

FOR BOTTOM ROLLER SLIDING COMMERCIAL DOORS, MAX. 270kg EACH

# HENDERSON®

SLIDING & FOLDING DOOR HARDWARE

AUSTRALIA'S WIDEST RANGE



## HENDERSON RMD

Door Hardware Division of  
RMD PRESS CO. PTY LTD.  
ACN 004 313 937

© COPYRIGHT HENDERSON RMD

© HENDERSON IS A REGISTERED TRADEMARK OF PC HENDERSON LTD (UK)

C60B

