

## APPLICATION

- ▶ Designed for stacking individual doors and panels in industrial, commercial and public buildings.
- ▶ Suitable for sliding individual doors to dedicated areas clear of the opening, such as in recesses or cupboards.
- ▶ Each door is supported by two hangers which can negotiate 90° switches.
- ▶ Floor channel is not necessary since the doors may be secured in position by stops, flush bolts or locks.
- ▶ To cover any width of opening, any number of doors can be used.

## DOOR SPECIFICATION

<b>Track System:</b>	<b>Stackadoor 100</b>
For Individual Doors:	
Max Door Height	2600mm for 10mm thick frameless toughened glass panels 3500mm for 12mm thick frameless toughened glass panels 6000mm for timber or metal framed doors
Max Door Weight	100kg
Max Door Width	1300mm for 10mm thick frameless toughened glass panels 1500mm for 12mm thick frameless toughened glass panels 6000mm for timber or metal framed doors
Min Door Thickness	10mm for 10mm thick frameless toughened glass panels 12mm for 12mm thick frameless toughened glass panels 30mm for metal framed doors 35mm for timber framed doors

The weights of toughened glass are 25kgm<sup>2</sup> for 10mm and 30kgm<sup>2</sup> for 12mm. Frameless toughened glass panels require a top rail for securing the M10 hanger bolts plus a bottom rail for securing the locks or bolts.

Timber doors can be flush, panelled or glazed. Suitable also for metal framed doors – refer to mounting plates below.

Doors should be constructed to provide secure fitting for the hangers.

## HARDWARE SPECIFICATION

<b>Track:</b>	500
Material	Aluminium, satin anodised finish
Standard lengths	2000mm, 3000mm, 4000mm, 5000mm and 6000mm

<b>Switches:</b>	
90° L switch 500x500	500L
90° T switch 500x500	500T
90° Cross switch 500x500	500X

**Material:** Aluminium, satin anodised finish  
Fasten track at 500mm maximum centres with M10 stainless steel bolts, reducing to 250mm centres at stacking area and switches. Fasten at 25mm from track ends and joints.

**Track Jointing Plate:** 500J180  
Use four at each butt joint in the track.

**Pivot Set:** 500P  
Top and bottom pivots for single access door.

**Hangers (2 per door):** 500HB10 with M10 adjusting bolt  
500HB16 with M16 adjusting bolt

Adjusting bolt in stainless steel.

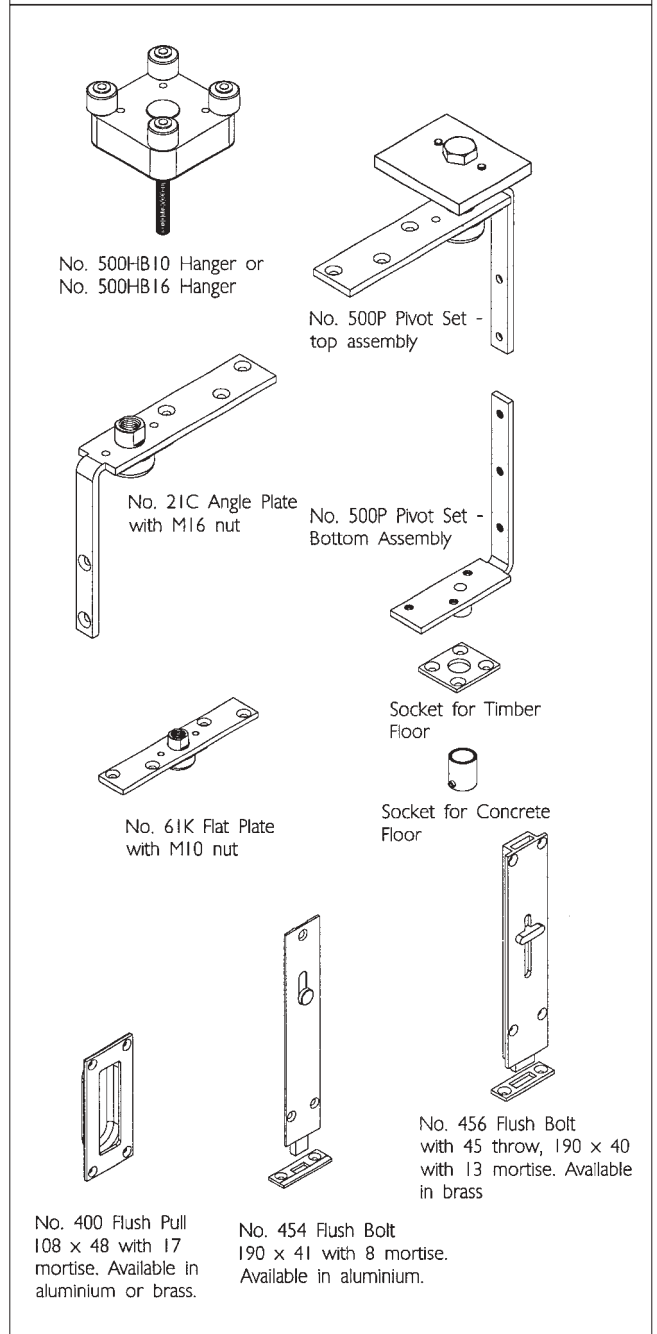
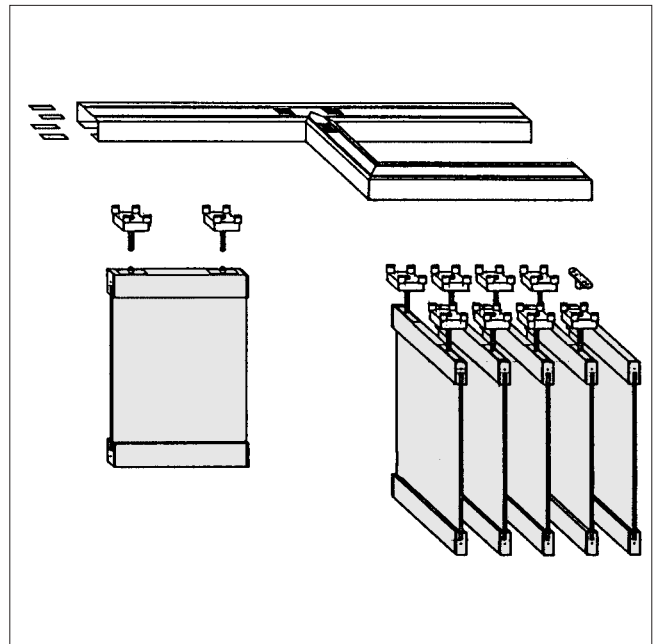
Each hanger has four large steel ball bearings. Each ball bearing is housed in a ball bearing swivel race within an aluminium square shaped body. Vertical adjustment of hangers is simple and positive.

**Mounting Plates (2 per door):**  
Mounting Plates are not necessary with frameless toughened glass panels, since the M10 adjusting bolts are fitted direct to the tapped mounting block in the top rail and secured by a grub screw through the mounting block.

Flat plate with M10 nut 61K for timber framed doors min 35mm thick  
or for metal framed doors min 30mm thick

Angle plate with M16 nut 21C for timber framed doors min 44mm thick  
Mounting plates are steel, zinc plated. Brass swivel nut housed in a ballrace.

**Accessories:** Flush Pulls and Flush Bolts  
Aluminium in satin anodised finish. Brass in satin chrome or polished brass finish.



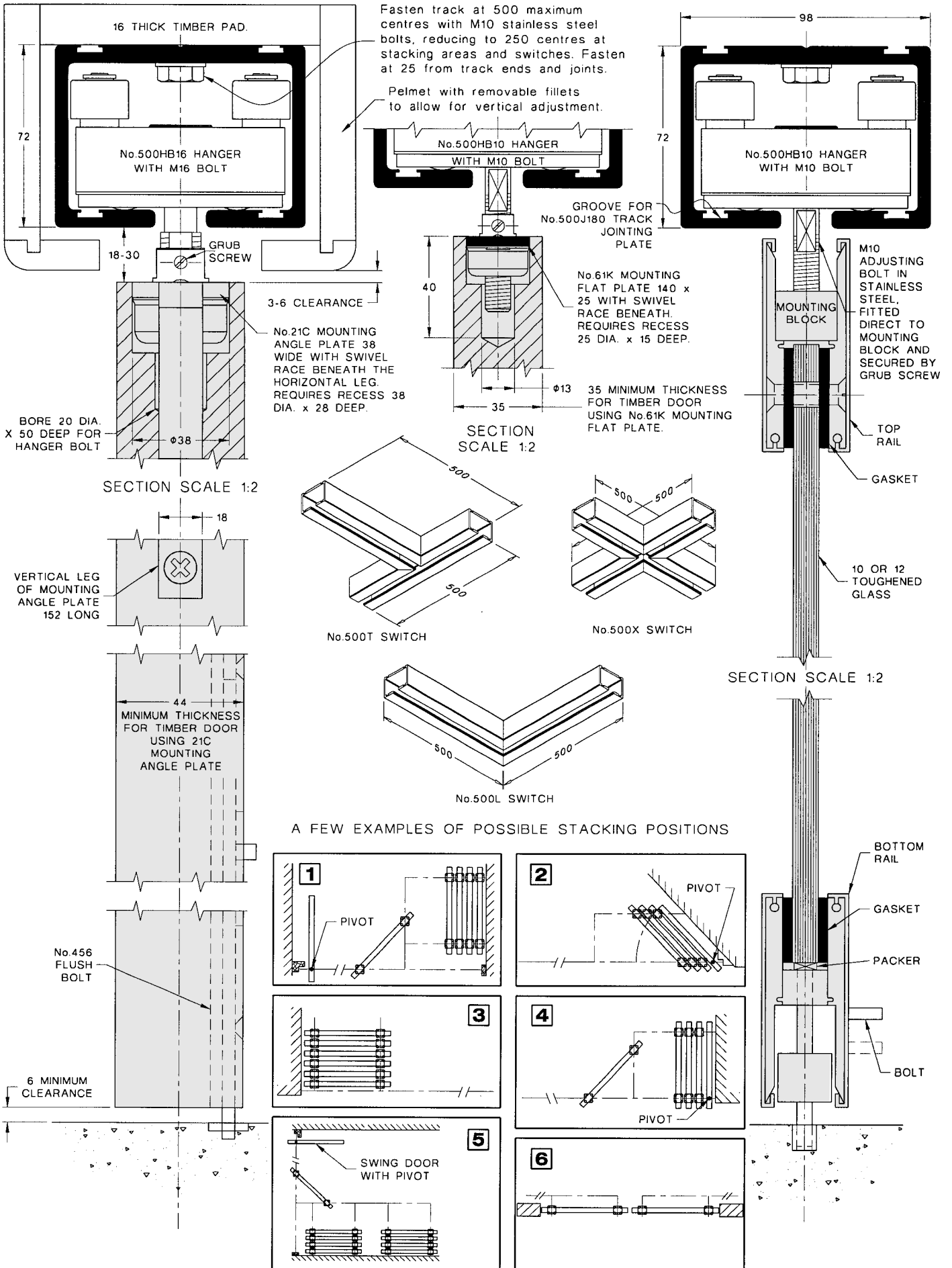
# Stackadoor 100

FOR TOP HUNG MULTIDIRECTIONAL STACKING DOORS, MAX. 100KG EACH

# HENDERSON®

SLIDING & FOLDING DOOR HARDWARE

AUSTRALIA'S WIDEST RANGE



NOTE: - Minimum distance between centre line of doors when stacked is 85.

F30B

**HENDERSON RMD**

Door Hardware Division of  
RMD PRESS CO. PTY LTD.

ACN 004 313 937

© COPYRIGHT HENDERSON RMD

© HENDERSON IS A REGISTERED TRADEMARK OF PC HENDERSON LTD (UK)



SALES OFFICES IN ALL STATES