

## APPLICATION

- ▶ Designed for stacking very large and heavy individual doors and panels in industrial, commercial and public buildings.
- ▶ Suitable for sliding individual doors to dedicated areas, usually on either side of the opening where folding doors would not be suitable.
- ▶ Each door is supported by two hangers which can negotiate 45°, 135° and swept 90° switches.
- ▶ Floor channel is not necessary since the doors may be secured in position by stops, flush bolts or locks.
- ▶ To cover any width of opening, any number of doors can be used.
- ▶ Specify stainless steel hangers for installations close to the waterfront, in areas with a high corrosive atmosphere or to comply with food or health regulations.

## DOOR SPECIFICATION

<b>Track Systems:</b>	<b>Stackadoor 200 &amp; 500</b>
For Individual Doors:	
Max Door Height	2600mm for 10mm thick frameless toughened glass panels 3500mm for 12mm thick frameless toughened glass panels 6000mm for timber or metal framed doors
Max Door Weight	200kg for hanger with M10 bolt 500kg for hanger with M16 bolt
Max Door Width	1300mm for 10mm thick frameless toughened glass panels 1500mm for 12mm thick frameless toughened glass panels 6000mm for timber or metal framed doors
Min Door Thickness	10mm for 10mm thick frameless toughened glass panels 12mm for 12mm thick frameless toughened glass panels 30mm for metal framed doors up to 200kg each 35mm for timber framed doors up to 200kg each 38mm for metal framed doors up to 500kg each 44mm for timber framed doors up to 500kg each

The weights of toughened glass are 25kgm<sup>2</sup> for 10mm and 30kgm<sup>2</sup> for 12mm. Frameless toughened glass panels require a top rail for securing the M10 hanger bolts plus a bottom rail for securing the locks or bolts. Timber doors can be flush, panelled or glazed. Suitable also for metal framed doors – refer to mounting plates below. Doors should be constructed to provide secure fitting for the hangers.

## HARDWARE SPECIFICATION

<b>Track:</b>	500
<b>Material:</b>	Aluminium satin anodised finish
<b>Standard lengths:</b>	2000mm, 3000mm, 4000mm, 5000mm & 6000mm

<b>Switches:</b>			
45°/135° Y Switch 500x280	500Y	90° L Swept switch 500x500	500SL
135° V Switch 500x500	500V	90° T Swept switch 500x500	500ST

**Material:** Aluminium satin anodised finish  
Fasten track at 500mm maximum centres with M10 stainless steel bolts, reducing to 250mm centres at stacking area and switches. Fasten at 25mm from track ends and joints.

**Track Jointing Plate:** 500J180 use four at each butt joint in the track.

**Pivot set:** 500P Top and bottom pivots for single access door.

**Hangers (2 per door):**  
With M10 adjusting bolt 500HW10 max door weight 200kg  
With M16 adjusting bolt 500HW16 max door weight 500kg  
With M10 adjusting bolt and all components in stainless steel 500HWS10 max door weight 200kg  
With M16 adjusting bolt and all components in stainless steel 500HWS16 max door weight 500kg  
Hangers 500HW10 and 500HW16 are fitted with steel wheels on maintenance free precision ballraces. Hanger body mild steel in black powder coat with guide rollers, adjusting bolt and nut in stainless steel. Vertical adjustment is simple and positive.  
Hangers 500HWS10 and 500HWS16 are fitted with stainless steel ballrace wheels and all other components are in stainless steel. Vertical adjustment is simple and positive.

**Mounting Plates (2 per door):**  
Mounting Plates are not necessary with frameless toughened glass doors, since the M10 adjusting bolts are fitted direct to the tapped mounting block in the top rail and secured by a grub screw through the mounting block.

**For use with the 500HW10 and 500HW16 Hangers:**

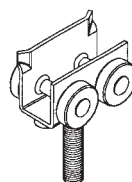
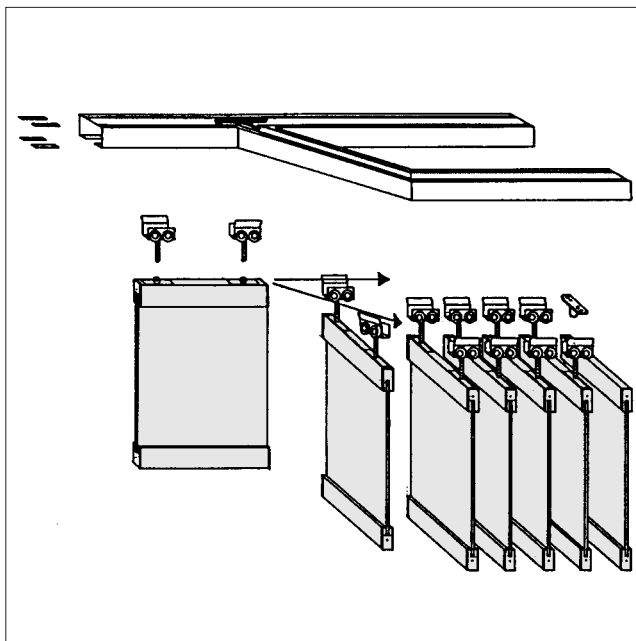
Flat plate with M10 nut	61K for timber framed doors min 35mm thick or for metal framed doors min 30mm thick
Flat plate with M16 nut	61C for timber or metal framed doors min 44mm thick
Angle plate with M16 nut	21C for timber framed doors min 44mm thick
Plates and nuts in steel, zinc plated. Brass swivel nut housed in a ballrace.	

**For use with the 500HWS10 and 500HWS16 Hangers:**

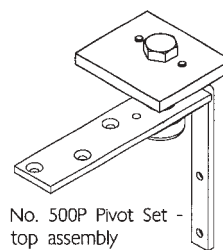
Flat plate with M10 nut	61SK for timber framed doors min 35mm thick or for metal framed doors min 30mm thick
Flat plate with M16 nut	61SC for timber or metal framed doors min 44mm thick
Angle plate with M16 nut	21SC for timber framed doors min 44mm thick
Plates and nuts in stainless steel. Brass swivel nut housed in a ballrace.	

**Accessories:** Flush Pulls and Flush Bolts

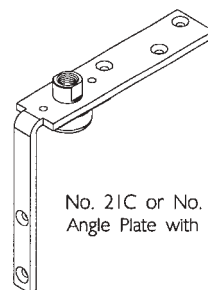
Aluminium in satin anodised finish. Brass in satin chrome or polished brass finish.



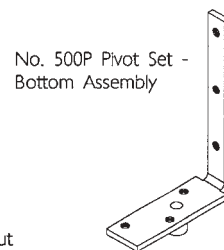
No. 500HW Hanger or No. 500HWS Hanger with M10 or M16 adjusting bolt



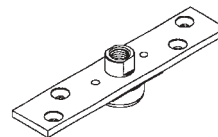
No. 500P Pivot Set - top assembly



No. 21C or No. 21SC Angle Plate with M16 nut



No. 500P Pivot Set - Bottom Assembly



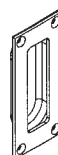
No. 61C or No. 61SC Flat Plate with M16 nut



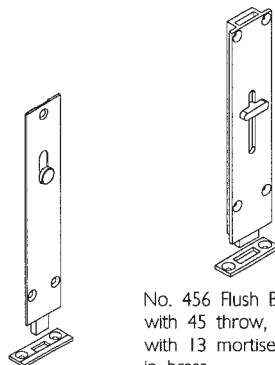
Socket for Timber Floor



Socket for Concrete Floor



No. 400 Flush Pull 108 x 48 with 17 mortise. Available in aluminium or brass.



No. 454 Flush Bolt 190 x 41 with 8 mortise. Available in aluminium.

No. 456 Flush Bolt with 45 throw, 190 x 40 with 13 mortise. Available in brass

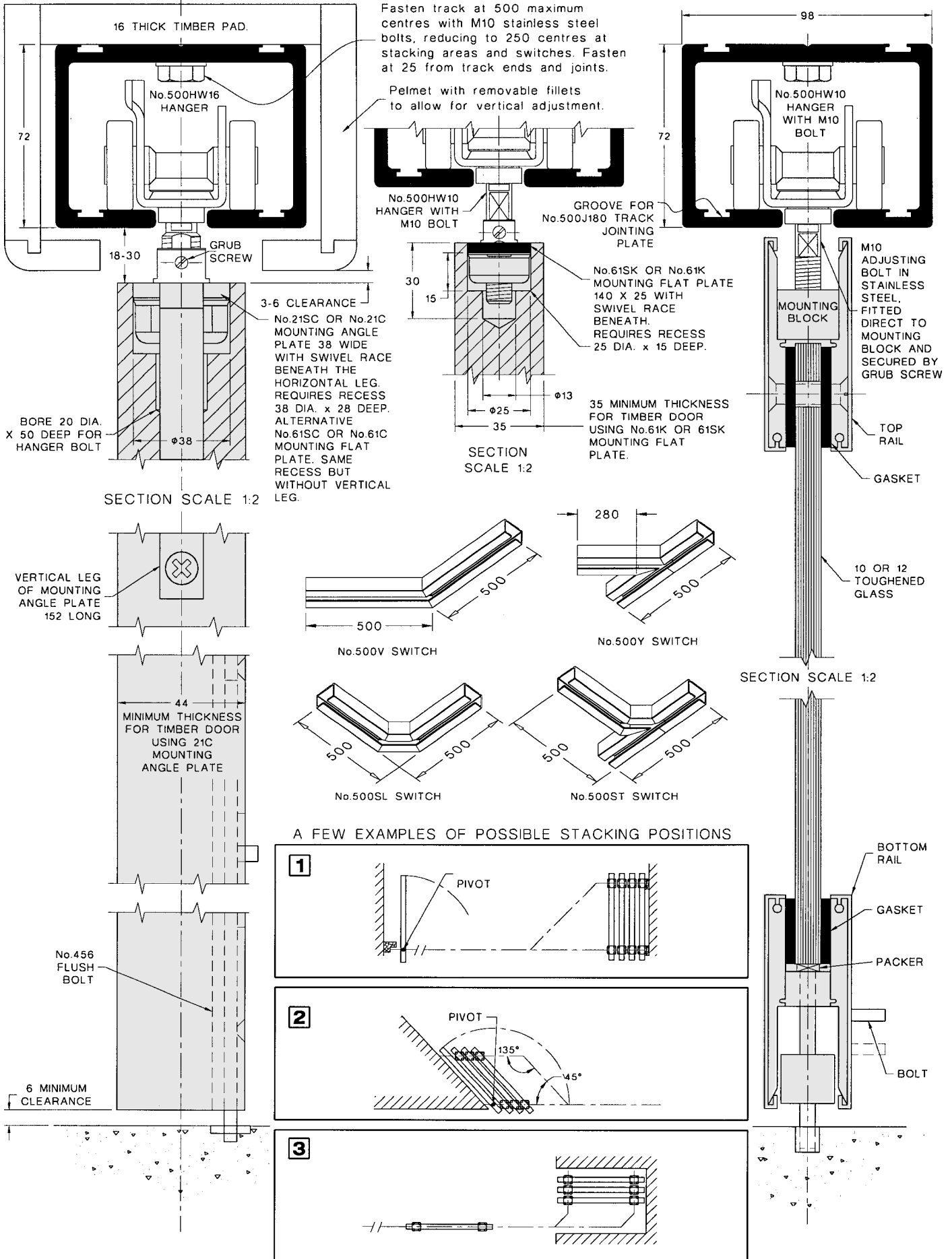
# Stackadoor 200 & 500

FOR TOP HUNG MULTIDIRECTIONAL STACKING DOORS, MAX. 500KG EACH

# HENDERSON®

SLIDING & FOLDING DOOR HARDWARE

AUSTRALIA'S WIDEST RANGE



NOTE: - Minimum distance between centre line of doors when stacked is 85.

## HENDERSON RMD

Door Hardware Division of  
RMD PRESS CO. PTY LTD.

ACN 004 313 937

© COPYRIGHT HENDERSON RMD

© HENDERSON IS A REGISTERED TRADEMARK OF PC HENDERSON LTD (UK)

F40B

