

This Guide to Quantities is only applicable to Data Sheets E40 and E50.

SPECIFICATIONS AND QUANTITIES

The specifications below and overleaf detail the maximum and minimum capacities for the track systems recommended.

Determine the number of leaves required to cover the opening. The leaves are hinged together to form units of up to eight leaves hinged to a post. Wider openings can be covered by including units 'floating' to either side of the opening. 'Floating' units consist of four, six or eight leaves.

If the leaf weight is unknown, the weight can be calculated using the chart in Section 'A'. Having calculated the weight, use the information below to select the appropriate track system and quantities for the unit or units required to cover the opening width.

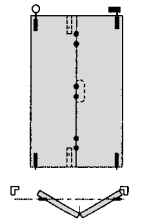
Specification for Individual Leaves

Max Leaf Height	3000mm	3300mm	3000mm	3300mm
Max Leaf Weight	45kg	75kg	45kg	75kg
Max Leaf Width	900mm	900mm	900mm	900mm
Recommended Leaf Thickness	35-50mm	35-50mm	35-50mm	35-50mm
Track System	Weatherfold Coastal 45 E40	Weatherfold Coastal 45 E40	Weatherfold Coastal T35 E50	Weatherfold Coastal T45 E50

Refer to Data Sheet

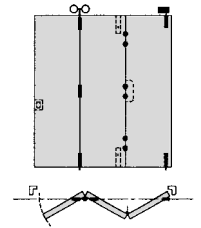
2 Leaf unit

Quantities	Reference Numbers			
Track	180	250	180	250
Hanger – End	183	253	183	253
Guide – End	258	258	258	258
Intermediate Hinge 100x66	2	205H	205M	205M
Hinge Handle	1	206H	206M	206M
Flush Bolt	2	456	456	456
Pivot Set	1	181H	181M	251M
Alternative Hinge to Post Channel	3	209H	209M	209M
Size to opening	94A, 94B, 94P	94A, 94B, 94P	94A, 94B, 94P	94A, 94B, 94P



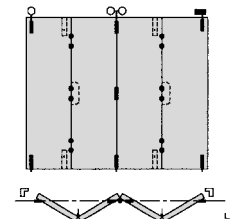
3 Leaf unit

Track	180	250	180	250
Hanger – Intermediate	1	184H	254H	184M
Guide – Intermediate	1	257H	257M	257M
Intermediate Hinge 100x66	3	205H	205H	205M
Hinge Handle	1	206H	206H	206M
Flush Bolt	2	456	456	456
Pivot Set	1	181H	251H	181M
Alternative Hinge to Post Channel	3	209H	209H	209M
Lockset	1	By others	By others	By others
Size to opening	94A, 94B, 94P	94A, 94B, 94P	94A, 94B, 94P	94A, 94B, 94P



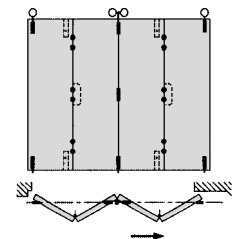
4 Leaf unit

Track	180	250	180	250
Hanger – Intermediate	1	184H	254H	184M
Hanger – End	1	183	253	183
Guide – Intermediate	1	257H	257M	257M
Guide – End	1	258	258	258
Intermediate Hinge 100x66	5	205H	205H	205M
Hinge Handle	2	206H	206H	206M
Flush Bolt	4	456	456	456
Pivot Set	1	181H	251H	181M
Alternative Hinge to Post Channel	3	209H	209H	209M
Size to opening	94A, 94B, 94P	94A, 94B, 94P	94A, 94B, 94P	94A, 94B, 94P



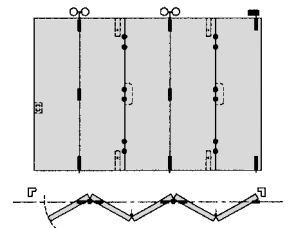
4 Leaf unit 'floating'

Track	180	250	180	250
Hanger – Intermediate	1	184H	254H	184M
Hanger – End	2	183	253H	183
Guide – Intermediate	1	257H	257M	257M
Guide – End	2	258	258	258
Intermediate Hinge 100x66	5	205H	205H	205M
Hinge Handle	2	206H	206H	206M
Flush Bolt	4	456	456	456
Channel	Size to opening	94A, 94B, 94P	94A, 94B, 94P	94A, 94B, 94P



5 Leaf unit

Track	180	250	180	250
Hanger – Intermediate	2	184H	254H	184M
Guide – Intermediate	2	257H	257M	257M
Intermediate Hinge 100x66	6	205H	205H	205M
Hinge Handle	2	206H	206H	206M
Flush Bolt	4	456	456	456
Pivot Set	1	181H	251H	181M
Alternative Hinge to Post Channel	3	209H	209H	209M
Lockset	1	By others	By others	By others
Size to opening	94A, 94B, 94P	94A, 94B, 94P	94A, 94B, 94P	94A, 94B, 94P



Guide to Quantities

FOR TOP HUNG EXTERIOR FOLDING DOORS ON WEATHERFOLD COASTAL TRACK SYSTEMS

HENDERSON[®]

SLIDING & FOLDING DOOR HARDWARE

AUSTRALIA'S WIDEST RANGE

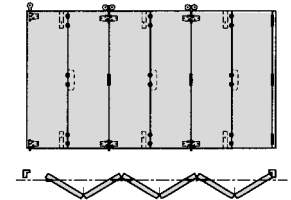
Specification for Individual Leaves

Max Leaf Height	3000mm	3300mm	3000mm	3300mm
Max Leaf Weight	45kg	75kg	45kg	75kg
Max Leaf Width	900mm	900mm	900mm	900mm
Recommended Leaf Thickness	35-50mm	35-50mm	35-50mm	35-50mm
Track System	Weatherfold Coastal 35	Weatherfold Coastal 45	Weatherfold Coastal T35	Weatherfold Coastal T45
Refer to Data Sheet	E40	E40	E50	E50

6 Leaf unit

Track
Hanger – Intermediate
Hanger – End
Guide – Intermediate
Guide – End
Intermediate Hinge 100x66
Hinge Handle
Flush Bolt
Pivot Set
Alternative Hinge to Post
Channel

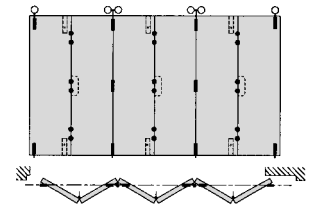
Quantities	Reference Numbers			
Size to opening	180	250	180	250
2	184H	254H	184M	254M
1	183	253	183	253
2	257H	257H	257M	257M
1	258	258	258	258
8	205H	205H	205M	205M
3	206H	206H	206M	206M
6	456	456	456	456
1	181H	251H	181M	251M
3	209H	209H	209M	209M
Size to opening	94A, 94B, 94P	94A, 94B, 94P	94A, 94B, 94P	94A, 94B, 94P



6 Leaf unit 'floating'

Track
Hanger – Intermediate
Hanger – End
Guide – Intermediate
Guide – End
Intermediate Hinge 100x66
Hinge Handle
Flush Bolt
Channel

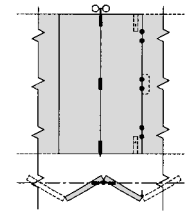
Size to opening	180	250	180	250
2	184H	254H	184M	254M
2	183	253	183	253
2	257H	257H	257M	257M
2	258	258	258	258
8	205H	205H	205M	205M
3	206H	206H	206M	206M
6	456	456	456	456
Size to opening	94A, 94B, 94P	94A, 94B, 94P	94A, 94B, 94P	94A, 94B, 94P



2 additional leaves to increase 5 or 6 leaf units to 7 or 8 leaf units

Hanger – Intermediate
Guide – Intermediate
Intermediate Hinge 100x66
Hinge Handle
Flush Bolt

1	184H	254H	184M	254M
1	257H	257H	257M	257M
3	205H	205H	205M	205M
1	206H	206H	206M	206M
2	456	456	456	456



TRACK AND CHANNEL

Choose sufficient track and channel to cover the overall opening width. If a 'floating' unit is required to slide clear of the opening, then sufficient track and channel is required to cover the width's of the reveal and the opening.

E30B

HENDERSON RMD

Door Hardware Division of
RMD PRESS CO. PTY LTD.
ACN 004 313 937

© COPYRIGHT HENDERSON RMD

© HENDERSON IS A REGISTERED TRADEMARK OF PC HENDERSON LTD (UK)



SALES
OFFICES
IN ALL
STATES