

This Guide to Quantities is only applicable to Data Sheets E80 and E90.

SPECIFICATIONS AND QUANTITIES

The specifications below and overleaf detail the maximum and minimum capacities for the track systems recommended. Determine the number of leaves required to cover the opening. The leaves are hinged together to form units of up to eight leaves hinged to a post. Wider openings can be covered by including units 'floating' to either side of the opening. 'Floating' units consist of four, six or eight leaves.

If the leaf weight is unknown, the weight can be calculated using the chart in Section 'A'. Having calculated the weight, use the information below to select the appropriate track system and quantities for the unit or units required to cover the opening width.

Specification for Individual Leaves

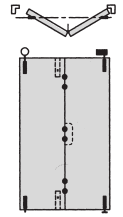
Max Leaf Height	3000mm	3000mm	3000mm	3300mm
Max Leaf Weight	45kg	75kg	45kg	75kg
Max Leaf Width	900mm	900mm	900mm	900mm
Recommended Leaf Thickness	35-50mm	35-50mm	35-50mm	35-50mm
Track System	Weatherfold Coastal Elite 45 E80 – Timber	Weatherfold Coastal Elite 75 E80 – Timber	Weatherfold Coastal Elite 45 E90 – Aluminium	Weatherfold Coastal Elite 75 E90 – Aluminium

Refer to Data Sheet

2 Leaf unit

Track
Pivot Set
Intermediate Hinge set
Hanger Set - End
Flush Bolt - Top
Flush Bolt - Bottom

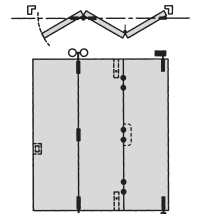
Quantities	Reference Numbers			
Size to opening	180	250	180	250
1	HEN1-45H	HEN1-75H	HEN1-45H	HEN1-75H
1	HEN3-H	HEN3-H	HEN3-H	HEN3-H
1	HEN2-45M	HEN2-75M	HEN2-45H	HEN2-75H
1	456	456	512	512
1	456E	456E	512E	512E
Size to opening	94A, 94B, 94P	94A, 94B, 94P	94A, 94B, 94P	94A, 94B, 94P



3 Leaf unit

Track
Pivot Set
Intermediate Hinge set (offset)
Intermediate Hanger Set
Flush Bolt - Top
Flush Bolt - Bottom

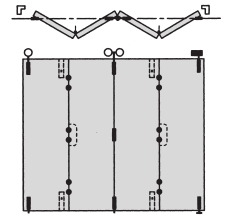
Quantities	Reference Numbers			
Size to opening	180	250	180	250
1	HEN1-45H	HEN1-75H	HEN1-45H	HEN1-75H
1	HEN7-H	HEN7-H	HEN7-H	HEN7-H
1	HEN4-45H	HEN4-75H	HEN4-45H	HEN4-75H
1	456	456	512	512
1	456E	456E	512E	512E
Size to opening	94A, 94B, 94P	94A, 94B, 94P	94A, 94B, 94P	94A, 94B, 94P



4 Leaf unit

Track
Pivot Set
Intermediate Hinge set (offset)
Intermediate Hanger Set
Hanger Set - End
Flush Bolt - Top
Flush Bolt - Bottom

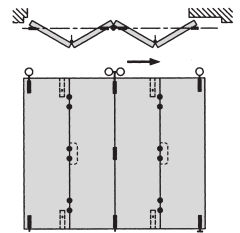
Quantities	Reference Numbers			
Size to opening	180	250	180	250
1	HEN1-45H	HEN1-75H	HEN1-45H	HEN1-75H
2	HEN7-H	HEN7-H	HEN7-H	HEN7-H
1	HEN4-45H	HEN4-75H	HEN4-45H	HEN4-75H
1	HEN2-45M	HEN2-75M	HEN2-45H	HEN2-75H
2	456	456	512	512
2	456E	456E	512E	512E
Size to opening	94A, 94B, 94P	94A, 94B, 94P	94A, 94B, 94P	94A, 94B, 94P



4 Leaf unit 'floating'

Track
Intermediate Hanger set
Intermediate Hinge set (offset)
Hanger Set - End
Flush Bolt - Top
Flush Bolt - Bottom

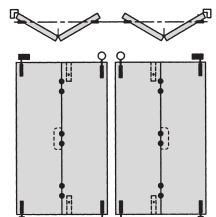
Quantities	Reference Numbers			
Size to opening	180	250	180	250
2	HEN4-45H	HEN4-75H	HEN4-45H	HEN4-75H
2	HEN7-H	HEN7-H	HEN7-H	HEN7-H
1	HEN2-45M	HEN2-75M	HEN2-45H	HEN2-75H
2	456	456	512	512
2	456E	456E	512E	512E
Size to opening	94A, 94B, 94P	94A, 94B, 94P	94A, 94B, 94P	94A, 94B, 94P



2 + 2 Leaf unit

Track
Pivot Set
Intermediate Hinge set
Hanger Set - Meeting
Hanger Set - End
Flush Bolt - Top
Flush Bolt - Bottom

Quantities	Reference Numbers			
Size to opening	180	250	180	250
1	HEN1-45H	HEN1-75H	HEN1-45H	HEN1-75H
2	HEN3-H	HEN3-H	HEN3-H	HEN3-H
1	HEN8-45M	HEN8-75M		
2			HEN2-45H	HEN2-75H
2	456	456	512	512
2	456E	456E	512E	512E
Size to opening	94A, 94B, 94P	94A, 94B, 94P	94A, 94B, 94P	94A, 94B, 94P



Guide to Quantities

FOR TOP HUNG EXTERIOR FOLDING DOORS ON WEATHERFOLD COASTAL ELITE TRACK SYSTEMS

HENDERSON[®]

SLIDING & FOLDING DOOR HARDWARE

AUSTRALIA'S WIDEST RANGE

Specification for Individual Leaves

Max Leaf Height
Max Leaf Weight
Max Leaf Width
Recommended Leaf Thickness
Track System

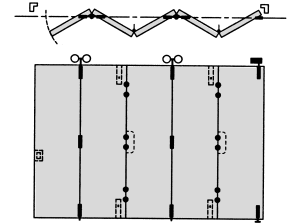
3000mm	3300mm	3000mm	3300mm
45kg	75kg	45kg	75kg
900mm	900mm	900mm	900mm
35-50mm	35-50mm	35-50mm	35-50mm
Weatherfold	Weatherfold	Weatherfold	Weatherfold
Coastal Elite 45	Coastal Elite 75	Coastal Elite 45	Coastal Elite 75
E80 - Timber	E80 - Timber	E90 - Aluminium	E90 - Aluminium

Refer to Data Sheet

5 Leaf unit

Track
Pivot Set
Intermediate Hinge set (offset)
Intermediate Hanger Set
Intermediate Hinge Set
Flush Bolt - Top
Flush Bolt - Bottom
Channel

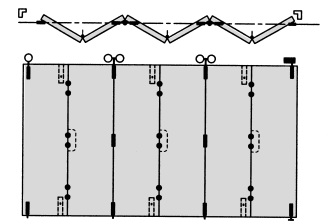
Quantities	Reference Numbers			
Size to opening	180	250	180	250
1	HEN1-45H	HEN1-75H	HEN1-45H	HEN1-75H
1	HEN7-H	HEN7-H	HEN7-H	HEN7-H
2	HEN4-45H	HEN4-75H	HEN4-45H	HEN4-75H
1	HEN3-H	HEN3-H	HEN3-H	HEN3-H
2	456	456	512	512
2	456E	456E	512E	512E
Size to opening	94A, 94B, 94P	94A, 94B, 94P	94A, 94B, 94P	94A, 94B, 94P



6 Leaf unit

Track
Pivot Set
Intermediate Hinge set (offset)
Intermediate Hanger Set
Intermediate Hinge Set
Hanger Set - End
Flush Bolt - Top
Flush Bolt - Bottom
Channel

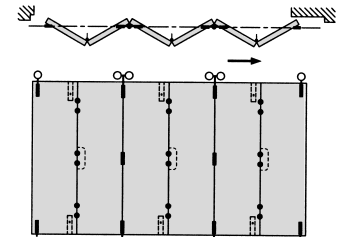
Size to opening	180	250	180	250
1	HEN1-45H	HEN1-75H	HEN1-45H	HEN1-75H
2	HEN7-H	HEN7-H	HEN7-H	HEN7-H
2	HEN4-45H	HEN4-75H	HEN4-45H	HEN4-75H
1	HEN3-H	HEN3-H	HEN3-H	HEN3-H
1	HEN2-45M	HEN2-75M	HEN2-45H	HEN2-75H
3	456	456	512	512
3	456E	456E	512E	512E
Size to opening	94A, 94B, 94P	94A, 94B, 94P	94A, 94B, 94P	94A, 94B, 94P



6 Leaf unit floating

Track
Intermediate Hinge set (offset)
Intermediate Hanger Set
Intermediate Hinge Set
Hanger Set - End
Flush Bolt - Top
Flush Bolt - Bottom
Channel

Size to opening	180	250	180	250
2	HEN7-H	HEN7-H	HEN7-H	HEN7-H
2	HEN4-45H	HEN4-75H	HEN4-45H	HEN4-75H
1	HEN3-H	HEN3-H	HEN3-H	HEN3-H
2	HEN2-45M	HEN2-75M	HEN2-45H	HEN2-75H
3	456	456	512	512
3	456E	456E	512E	512E
Size to opening	94A, 94B, 94P	94A, 94B, 94P	94A, 94B, 94P	94A, 94B, 94P



E70B

HENDERSON RMD

Door Hardware Division of
RMD PRESS CO. PTY LTD.
ACN 004 313 937

© COPYRIGHT HENDERSON RMD

® HENDERSON IS A REGISTERED TRADEMARK OF PC HENDERSON LTD (UK)



SALES
OFFICES
IN ALL
STATES