

APPLICATION

- ▶ Suitable for residential and light commercial folding doors.
- ▶ Ideal for wardrobes, cupboards, pantries, refreshment bars, laundries, workbenches, etc., where 100% access is required.
- ▶ The 'Clearfold 14' hinged arm hardware set allows two leaves to be hinged to a jamb and to open 180 degrees.
- ▶ Wider openings can be covered by two sets, allowing two leaves to be hinged to each jamb.
- ▶ No sliding track or bottom guide channel is necessary.

DOOR SPECIFICATION

Guide System: Clearfold 14

For Individual Leaves:

Max Leaf Height	2400mm
Max Leaf Weight	14kg
Max Leaf Width	610mm
Min Leaf Width	300mm
Min Leaf Thickness	25mm
Max Leaf Thickness	35mm

End folding units of two leaves can be hinged to each side of the opening.

Leaves should be made of equal width.

Door leaves should be lightly framed of flush, panelled or louvre construction.

STANDARD SETS

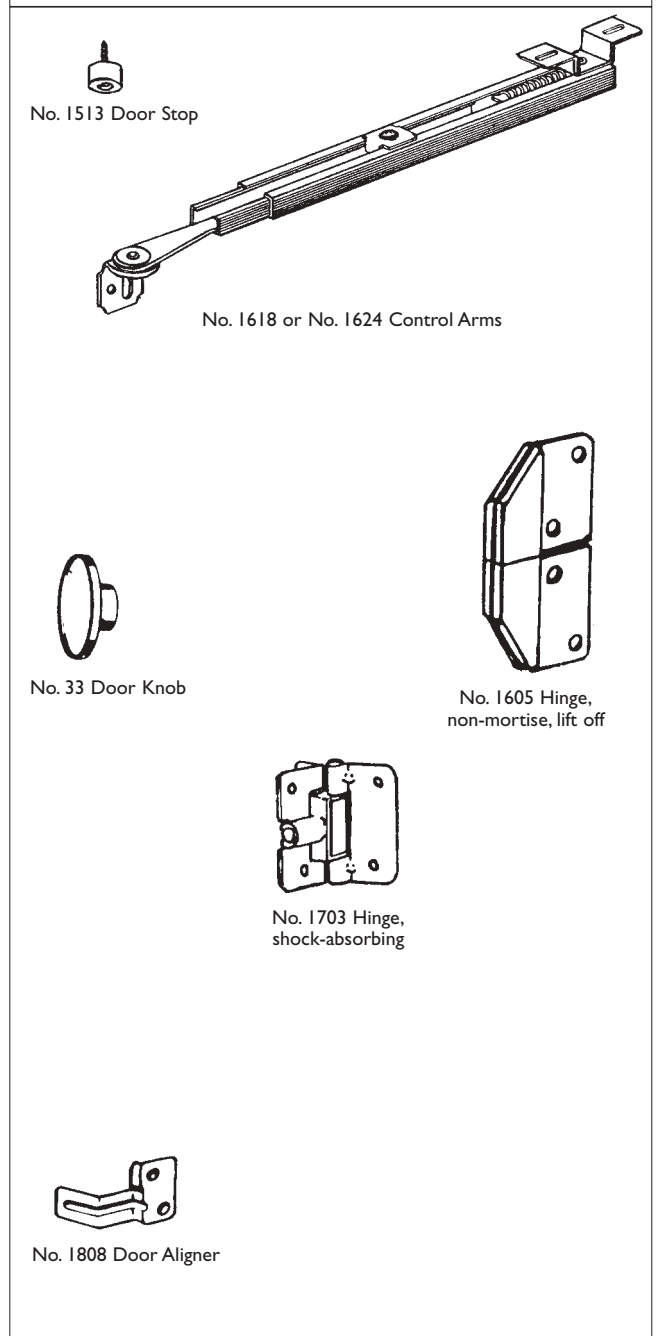
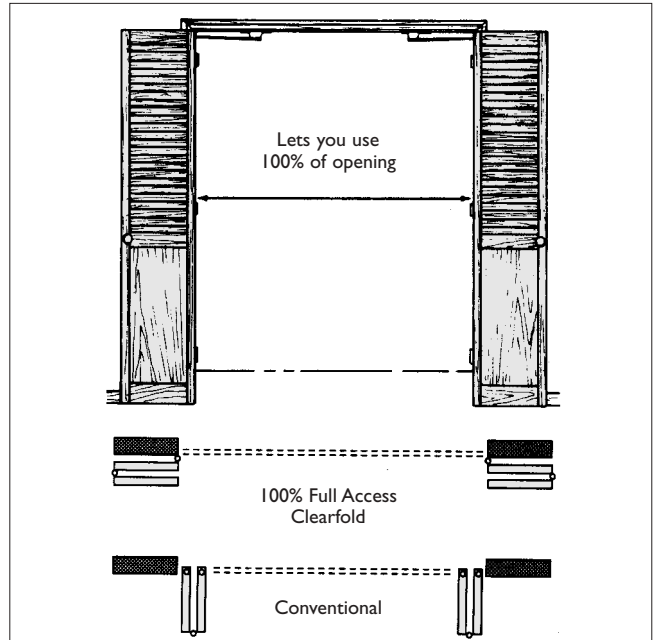
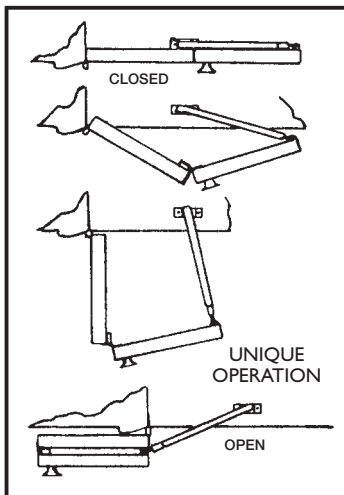
Sets, suitable for two leaves, comprise one control arm, three 1605 non-mortise lift-off hinges, three 1703 shock-absorbing hinges, one 1513 door stop, one 33 door knob, one 1808 aligner, all screws and fitting instructions.

Set No.	Quantity	Opening Width
B180-09	One	605mm to 922mm for two leaves
B180-09	Two	1205mm to 1840mm for four leaves
B180-12	One	910mm to 1227mm for two leaves
B180-12	Two	1815mm to 2449mm for four leaves

HARDWARE SPECIFICATION

- Control Arm: 1618 steel, woodtone brown finish in set B180-09
- Control Arm: 1624 steel, woodtone brown finish in set B180-12
- Hinge, non-mortise, lift off: 1605 steel in zinc dichromate finish
- Hinge, shock-absorbing: 1703 steel in zinc dichromate finish
- Door stop: 1513 rubber
- Door knob: 33 nylon
- Aligner: 1808 steel in zinc dichromate finish

All screws are zinc dichromate.



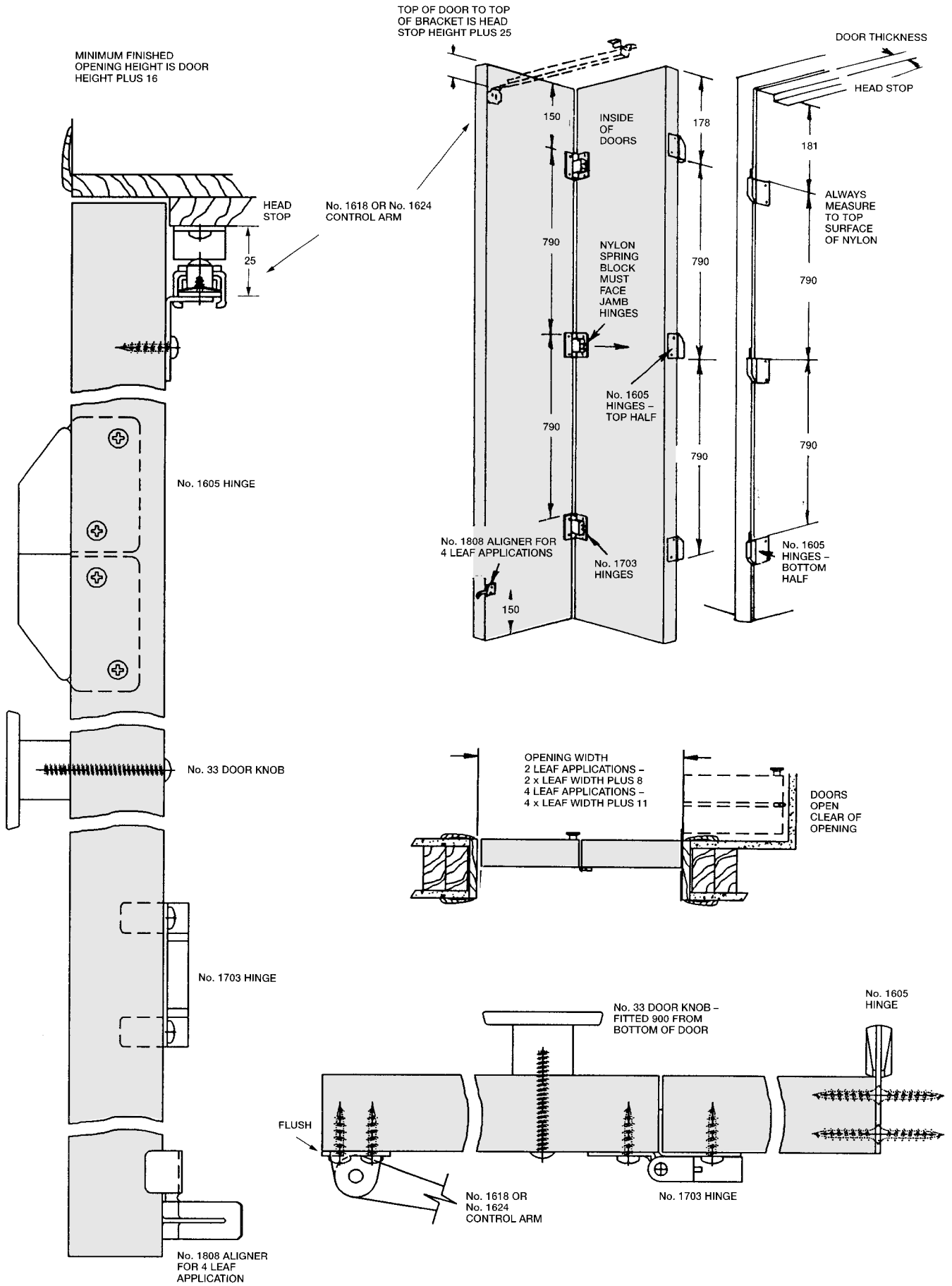
Clearfold 14

FOR TOP GUIDED INTERIOR BI-FOLDING DOORS, MAX. 14kg PER LEAF

HENDERSON®

SLIDING & FOLDING DOOR HARDWARE

AUSTRALIA'S WIDEST RANGE



D30B

HENDERSON RMD

Door Hardware Division of
RMD PRESS CO. PTY LTD.

ACN 004 313 937

© COPYRIGHT HENDERSON RMD

© HENDERSON IS A REGISTERED TRADEMARK OF PC HENDERSON LTD (UK)

