

## APPLICATION

- ▶ Designed to allow very heavy and large industrial doors to be easily moved.
- ▶ To cover any width of opening, any number of doors can be used.
- ▶ To accommodate different building designs, doors can slide to one or both sides.
- ▶ Hinged door for easy access may be incorporated into a sliding door.
- ▶ Where doors are fitted externally, a canopy is recommended.

## DOOR SPECIFICATION

**Track System:** Double Run 2000

For Individual Doors:

Max Door Height 6000mm  
 Max Door Weight 2000kg  
 Door Thickness 60-70mm

For ease of operation it is recommended that the door width should not exceed 75% of door height.

Timber doors for industrial applications should be framed, ledged and braced.

Metal doors should be constructed of box section channel or angle framing, well braced and clad with flat or corrugated sheets.

## HARDWARE SPECIFICATION

**Track:** 307 (5mm thick)  
 Material Zinc dichromate steel  
 Standard lengths 2000mm and 3000mm

### Brackets:

Face fitted - open & closed 5S/307 Pressed steel, zinc plated  
 Soffit fitted - open & closed 4S/307 Pressed steel, zinc plated, fitted in pairs – see overleaf.

Fit at 750mm maximum centres.

### Hangers (2 per door):

Timber Doors - apron fitting 53FJS  
 Metal Doors - angle frame 56FJS  
 Metal Doors - box frame 56FJLS

Hangers are fitted with steel wheels on maintenance free sealed for life precision ball bearings.

Vertical adjustment is simple and positive.

### Guides:

Timber Doors - face fitting 102/97 with steel roller  
 Metal Doors - angle frame 104P/97 with brass roller  
 Metal Doors - box frame 104PL/97 with brass roller

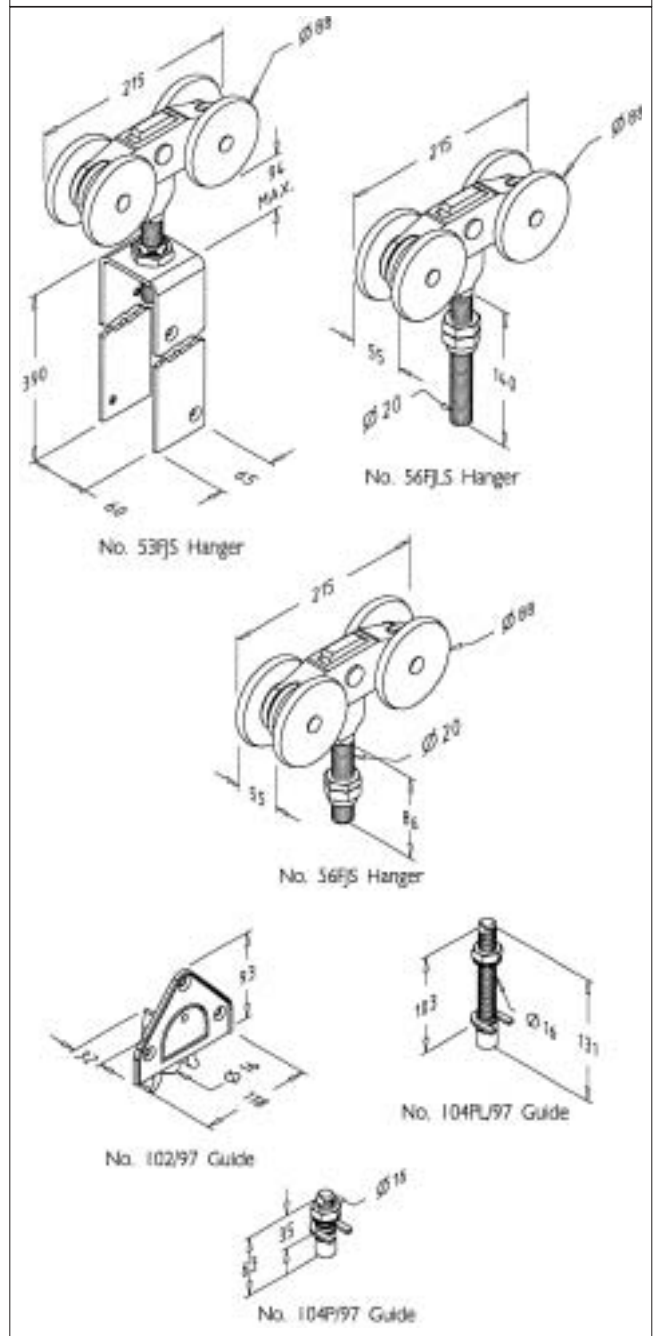
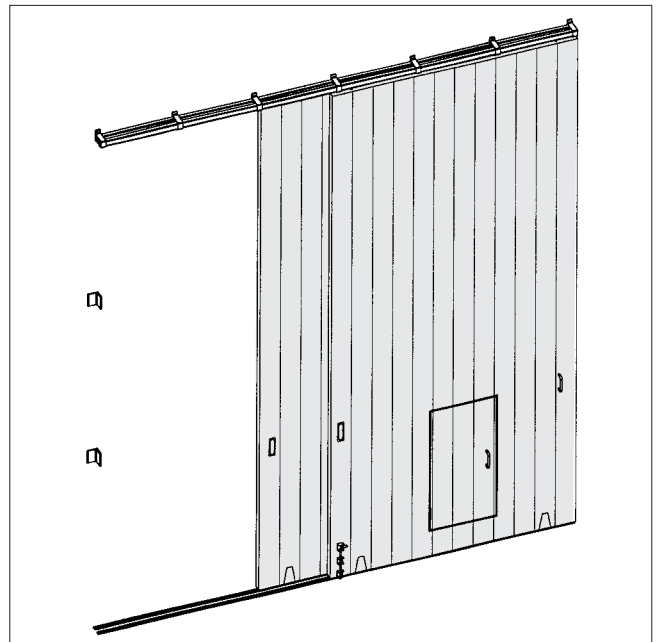
All steel parts are zinc plated.

### Channels:

Deep channel 97 (2mm thick) Galvanised steel  
 Shallow channel 100 (2mm thick) Galvanised steel  
 Standard lengths 2000mm, 3000mm and 4000mm  
 Pre-drilled for lugging into concrete floor and for use with a drainage funnel.

### Accessories:

Bow Handles, Flush Pulls, Surface Bolts, Flush Bolts, Door Stops and Drainage Funnel.



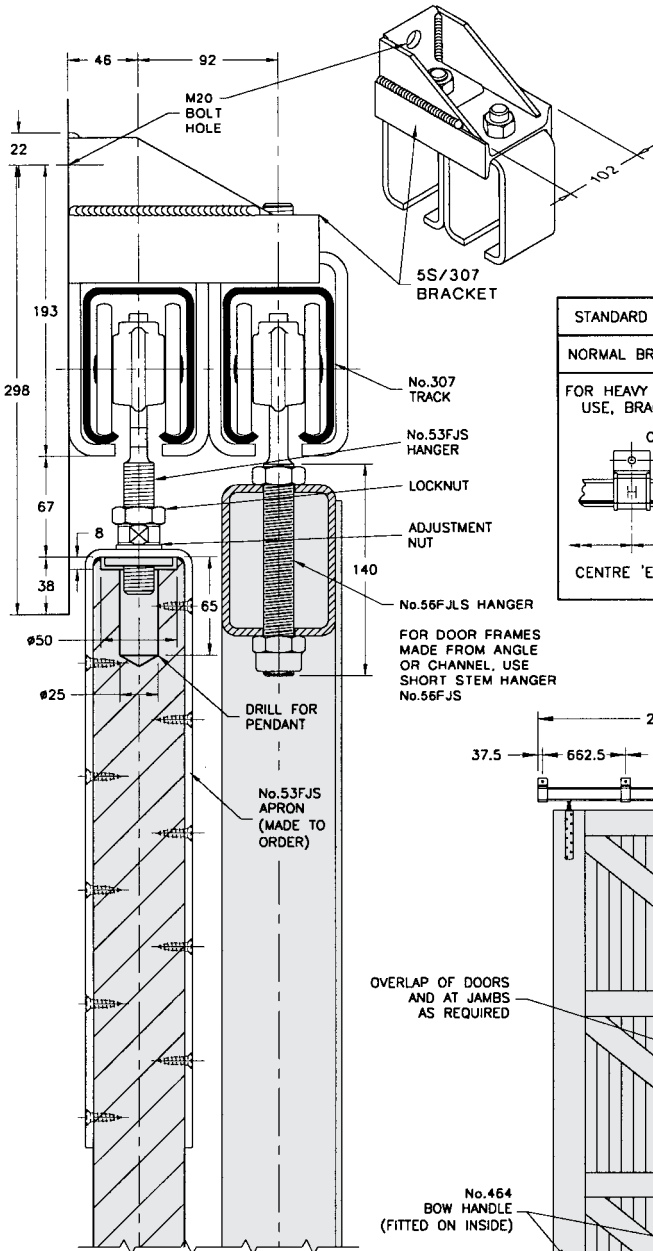
# Double Run 2000

FOR TOP HUNG STRAIGHT SLIDING DOORS, MAX. 2000kg EACH

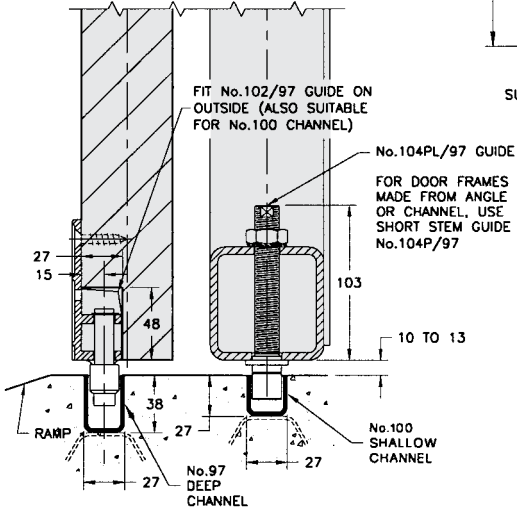
# HENDERSON®

SLIDING & FOLDING DOOR HARDWARE

AUSTRALIA'S WIDEST RANGE

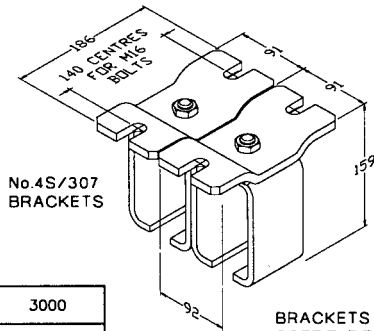


SECTION SCALE 1:5



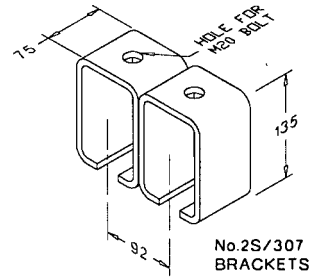
STANDARD TRACK LENGTH	2000	3000
NORMAL BRACKET CENTRES	650-700	750

FOR HEAVY DOORS, OR THOSE SUBJECTED TO ABNORMAL USE, BRACKET CENTRES SHOULD BE REDUCED TO 500

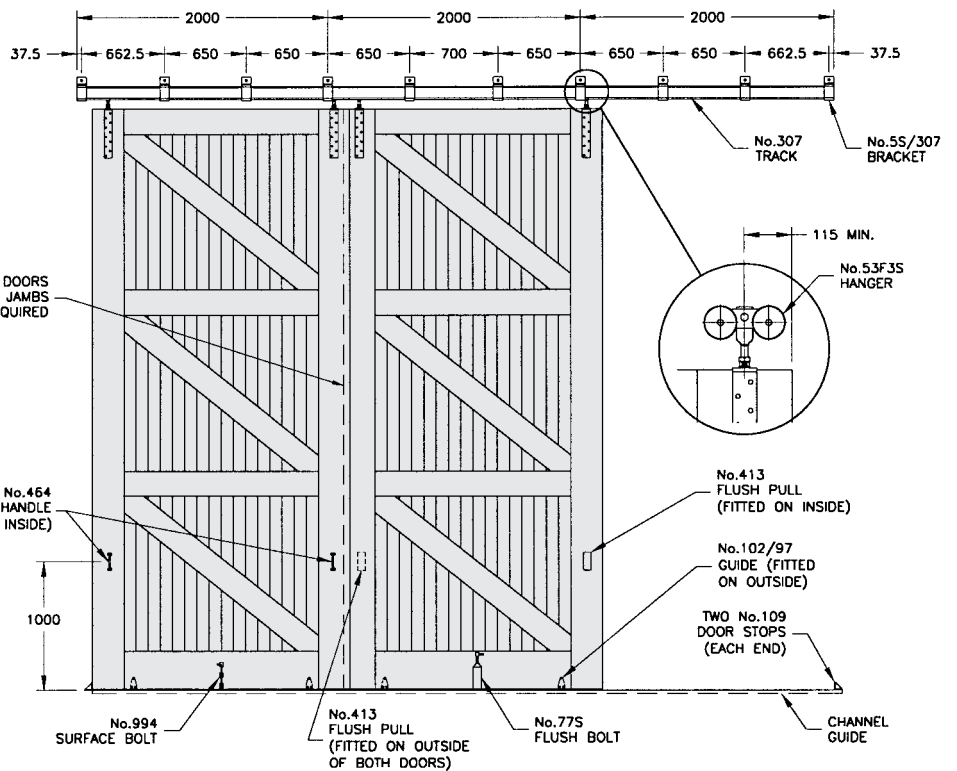


No.4S/307 BRACKETS

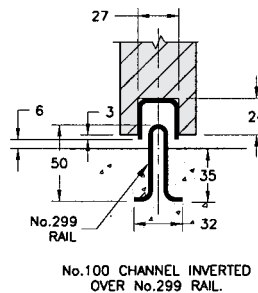
BRACKETS FOR SOFFIT FITTING USED IN PAIRS



No.2S/307 BRACKETS



FRONT VIEW - DOORS SLIDING INSIDE. IF DOORS SLIDING OUTSIDE, REPLACE SURFACE BOLT WITH No.77S FLUSH BOLT AND BOW HANDLES WITH No.413 FLUSH PULLS.



No.100 CHANNEL INVERTED OVER No.299 RAIL.

B210B

## HENDERSON RMD

Door Hardware Division of  
RMD PRESS CO. PTY LTD.

ACN 004 313 937

© COPYRIGHT HENDERSON RMD

© HENDERSON IS A REGISTERED TRADEMARK OF PC HENDERSON LTD (UK)



SALES OFFICES IN ALL STATES