

## APPLICATION

- ▶ Triple lines of track allow wider effective openings where the overall door travel is limited.
- ▶ Doors may slide within the opening limits providing a two thirds clear opening or slide clear of the opening, to provide unrestricted access.
- ▶ To cover any width of opening, any number of doors can be used.
- ▶ To accommodate different building designs, doors can slide to one or both sides.
- ▶ Hinged door for easy access may be incorporated into a sliding door.
- ▶ Where doors are fitted externally, a canopy is recommended.

## DOOR SPECIFICATION

Track Systems:	Triple Run				
	200	300	450	700	2000
For Individual Doors:					
Max Door Height	3000mm	3600mm	4200mm	4800mm	6000mm
Max Door Weight Nylon Hanger	200kg	300kg	450kg	–	–
Max Door Weight Steel Hanger	200kg	300kg	450kg	700kg	2000kg
Door Thickness – minimum	35mm	43mm	43mm	43mm	60mm
– maximum	48mm	57mm	57mm	57mm	70mm

For ease of operation it is recommended that the door width should not exceed 75% of door height.

Timber doors for interior use can be of flush construction or glazed.

Timber doors for industrial applications should be framed, ledged and braced.

Metal doors should be constructed of box section, channel or angle framing, well braced and clad with flat or corrugated sheets.

## HARDWARE SPECIFICATION

Track:	290	301	301H	305	307
Material thickness	2mm	2mm	3mm	3mm	5mm
Material – 2mm and 3mm thick from galvanised steel. 5mm thick in zinc dichromate steel.					
Standard lengths	2000mm	2000mm	2000mm	2000mm	2000mm
	3000mm	3000mm	3000mm	3000mm	3000mm
	4000mm	4000mm	4000mm	4000mm	
	6000mm	6000mm	6000mm		

### Brackets:

Face fitted Triple Brackets, open & closed  
– grey iron casting

–	7/301	7/301	7/305	–
---	-------	-------	-------	---

Soffit fitted Triple Brackets, open & closed  
– grey iron casting  
– pressed steel, zinc plated

–	–	–	8/305	–
–	8S/301	8S/301	–	–

Soffit fitted Single Brackets, fitted on three parallel lines

– pressed steel, zinc plated	2S/290	2S/301	2S/301	2S/305	2S/307
– aluminium alloy casting	4A/290	4A/301	4A/301	–	–
– grey iron casting	–	–	–	4/305	–
– pressed steel, zinc plated	–	–	–	–	4S/307

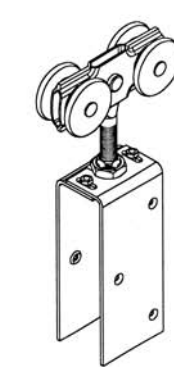
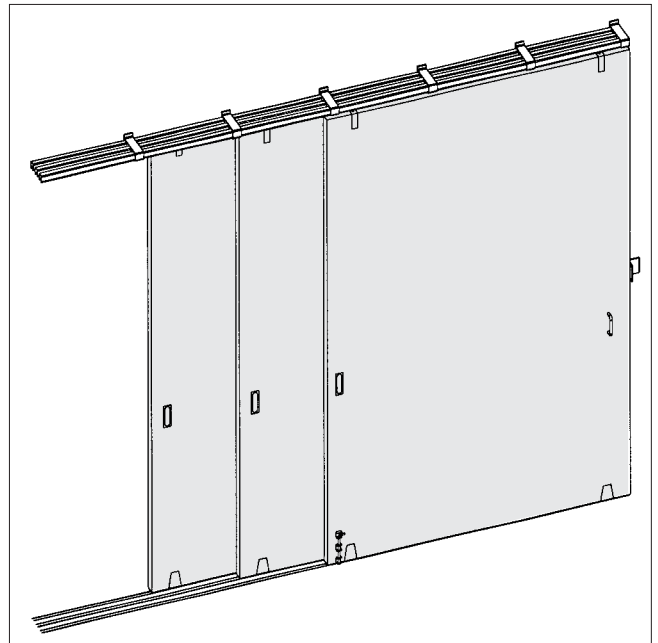
Fit at 900mm maximum centres.

### Bracket End Clips:

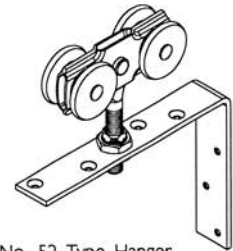
Refer Data Sheets below	–	S/301EC	S/301EC	–	–
Refer Data Sheets below	A/290EC	A/301EC	A/301EC	–	–

### Hangers (2 per door)

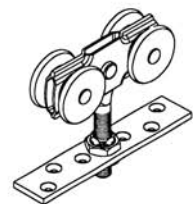
Guides	REFER TO DATA SHEETS	B145	B150	B150	B160	B170
Channels		or	or	or	or	or
Accessories		B180	B190	B190	B200	B210



No. 53 Type Hanger



No. 52 Type Hanger



No. 57 Type Hanger



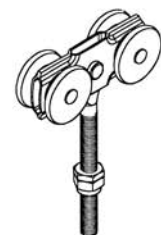
No. 102/97 Guide



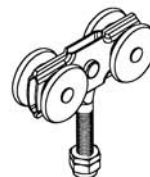
No. 106 Type Guide



No. 105R/97 Guide



No. 56L Type Hanger



No. 56 Type Hanger



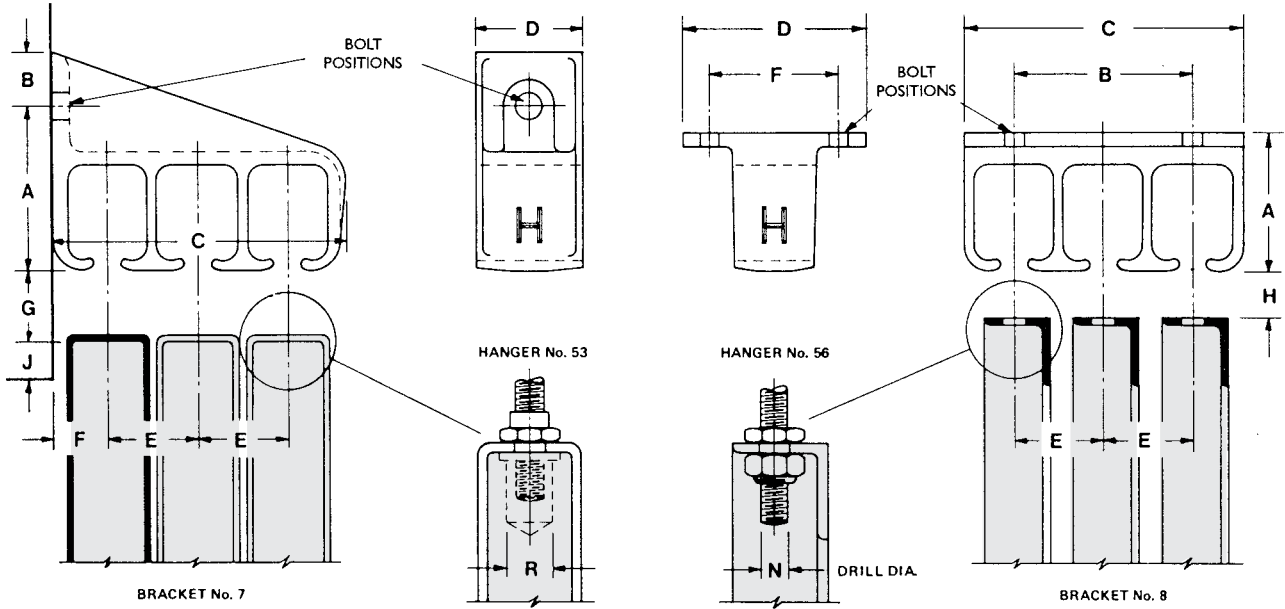
No. 104P/97 Guide



No. 104PL/97 Guide

# Triple Run 200-2000

FOR TOP HUNG STRAIGHT SLIDING DOORS, MAX. 2000kg EACH



**CAPACITIES**

**BRACKET No. 7 (SIDEWALL)**

TRACK No.	A	B	C	D	E	F	BOLT DIA.
290	-	-	-	-	-	-	-
301 301H	116	38	210	75	63.5	40	M16
305	159	38	276	89	89	51	M20
307	-	-	-	-	-	-	-

TRACK No.	DOORS		BRACKET No.
	HEIGHT MAX.	WEIGHT MAX.	
290	3000	200 kg	4A/290*
301	3600	300 kg	7/301
301H	4200	450 kg	or 8S/301
305	4800	700 kg	7/305
			or 8/305
307	6000	2000 kg	4S/307*

**BRACKET No. 8 (SOFFIT)**

TRACK No.	A	B	C	D	E	F	BOLT DIA.
290*	67	-	-	75	-	60	M8
301 301H	97	127	178	118	66	92	M12
305	143	178	264	197	89	140	M20
307*	159	-	-	184	-	140	M16

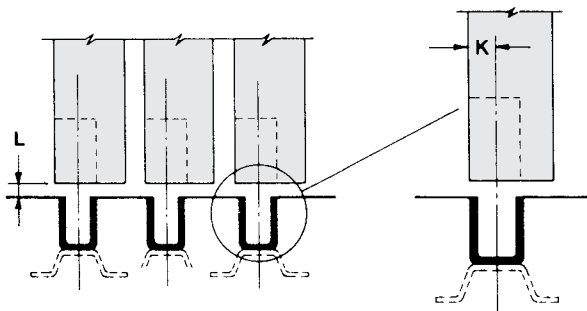
TRACK No.	G	H	J	K	L	M	N	P	R
290	-	20	-	19	10	10	11	17	11
301 301H	50	32	25	14	10	10	17	21.5	21
305	50	40	25	14	13	13	17	21.5	21
307	-	40	-	14	13	13	21	21.5	25

\* WHEN A TRIPLE LINE OF TRACK 290, OR 307 IS USED, THREE SOFFIT BRACKETS 4A/290 OR 4S/307 MUST BE FITTED SIDE BY SIDE AT CENTRES EQUAL TO DOOR THICKNESS PLUS WORKING CLEARANCE.

PLEASE CONSULT US WHEN THE PROPOSED INSTALLATION IS COMPLICATED OR UNUSUAL.

FOR FURTHER DETAILS OF TRACKS, BRACKETS, HANGERS, GUIDES, ETC., AND FOR DESIGN AND LAYOUT DETAILS PLEASE SEE APPROPRIATE DATA SHEET - B2, B14-B21.

**GUIDE No. 102/97**



**GUIDE No. 104P/97**

