

**APPLICATION**

- ▶ Suitable for interior top hung sliding doors.
- ▶ Ideal for residential situations where smooth and silent operation is of major importance e.g. bedrooms and nurseries.
- ▶ Suitable for a single door or for two doors on a bi-parting installation - door width limits apply.
- ▶ The track can be either face or soffit fitted.

**DOOR SPECIFICATION**

**Track System:** Twinwheel 45

For Individual Doors:

Max Door Weight 45kg  
Max Door Width 1520mm  
Min Door Width 620mm  
Min Door Thickness 25mm

Suitable for use with timber framed doors of flush, panelled or glazed construction. Provision must be made for fitting the hanger top plates securely, since the hanger strikes the door stops.

**STANDARD SETS**

Sets comprise top track, hanger assembly, door stops, guide, all screws and installation instructions.

Set No.	Suitable for	Min and Max door width	Track length
TW3	Single door	620mm to 920mm	1630mm
TW4	Single door	920mm to 1220mm	2230mm
TW5	Single door	1220mm to 1520mm	2830mm
TW3D	Bi-parting doors	620mm to 870mm	3320mm

**HARDWARE SPECIFICATION**

**Track:** I71  
Material: Aluminium, mill finish  
**Hanger assembly:** I72  
Material: Aluminium, mill finish

The track and hanger assembly on each standard sets, are specifically designed for the minimum and maximum travel of the door and are not available in other sizes.

The track has a rounded trough for smooth operation and a 'hooded' top to prevent the hanger assembly jumping off the track. The track can be sidewall or soffit fitted.

The aluminium extruded hanger assembly is in one piece for ease of fitting and correct alignment of wheels. The nylon wheels, with integrated bronze axles, provide a friction reduced differential action.

**Top Plate:** I72P  
The steel top plate, complete with adjusting bolt, washers and nut, allows ample vertical and lateral adjustment. Components are zinc plated.

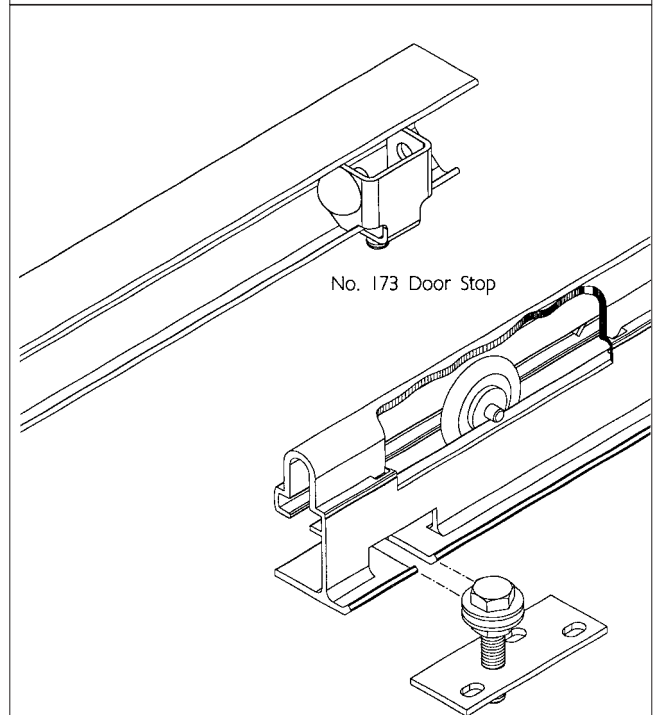
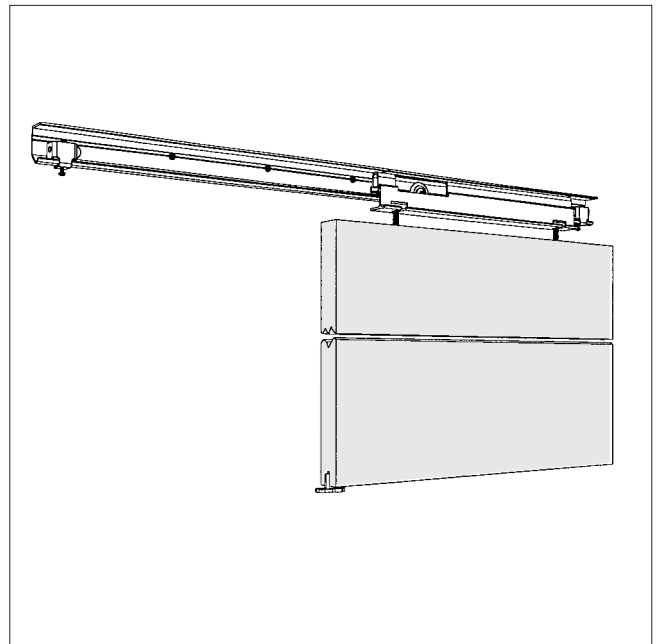
**Door Stop:** I73  
The zinc plated steel door stop includes a rubber buffer. The stop is fitted into the track and is secured in place with a screw beneath the track.

**Guide:** I01N  
The nylon guide is designed to slide through a 20mm deep by 5mm wide sawcut in the bottom rail of the door. The guide is fitted on the floor at the edge of the opening in the overlap area. The guide has lateral adjustment.

**Accessories:**

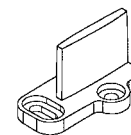
**Guide:** I02WA  
Guide in zinc plated steel, has lateral adjustment. Fits on the wall or architrave, in the overlap area, and slides through a 20mm deep by 5mm wide sawcut in the bottom rail of the door. Floor left free of hardware.

**Guide:** I03WA  
Guide in white nylon, fits on the wall or architrave, in the overlap area, no need to groove the door, since the guide supports the door faces. The guide is adjustable for doors from 35mm to 45mm thick. Floor left free of hardware.



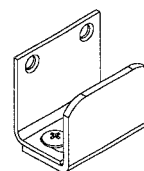
No. 173 Door Stop

No. 172P Top Plate

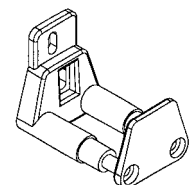


No. 101N Guide - supplied in sets and fitting packs

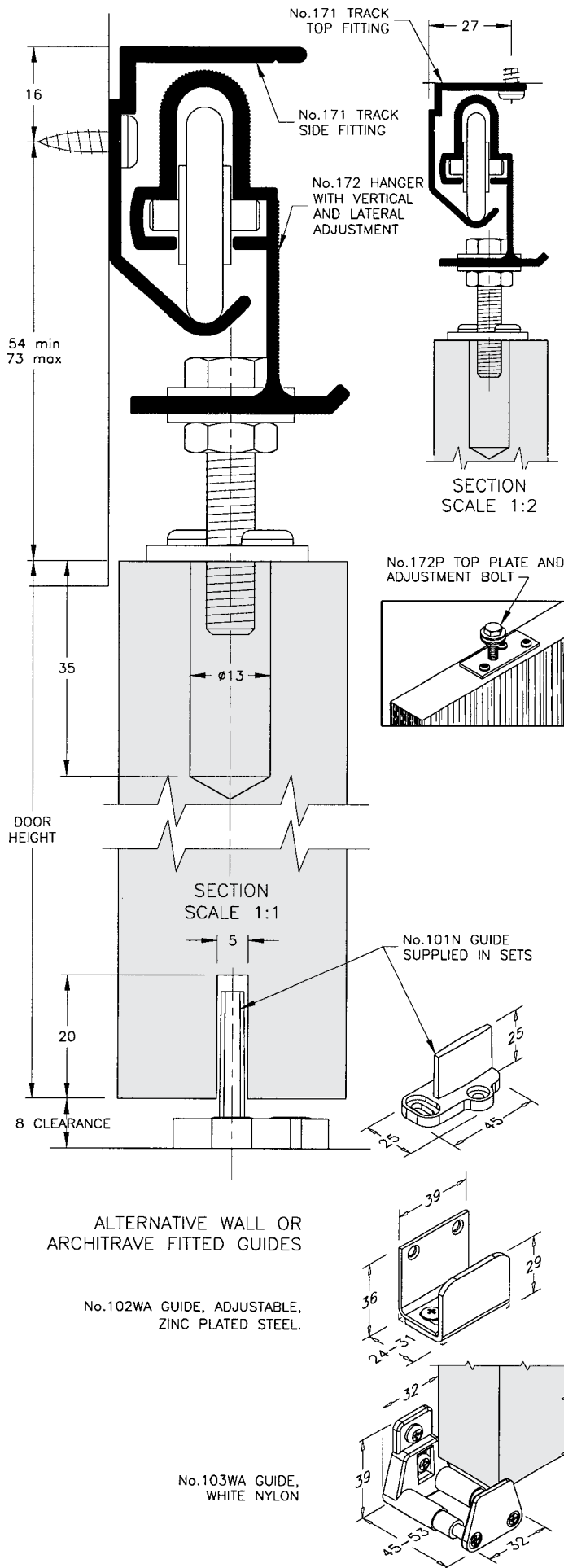
**ALTERNATIVE GUIDE SYSTEMS**



No. 102WA Guide



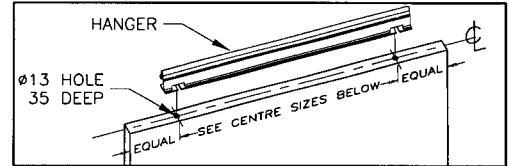
No. 103WA Guide



## INSTALLATION INSTRUCTIONS

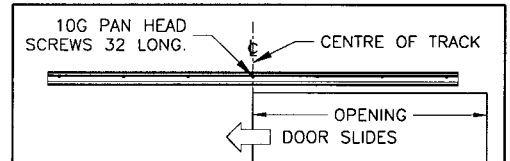
### 1 Groove Underside of Door

Groove 20mm deep by 5mm wide, centrally in the bottom of the door as shown. Alternatively order the optional architrave surface guides 102WA or 103WA illustrated below left of page.



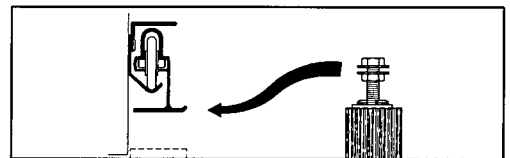
### 2 Fit Hanger to Door

Drill two holes  $\varnothing 13 \times 35$  deep, centrally in the top of the door and at the following centres:-  
 550 on TW3 Set for door 620-920 wide.  
 850 on TW4 Set for door 920-1220 wide.  
 1150 on TW5 Set for door 1220-1520 wide.  
 470 on TW3D Set for doors 620-870 wide.  
 Install top plates with the single screw hole towards the edge of the door - see illustration at left. To install top plates, use 32 long 10g screws in the centre of slotted holes with adjustment bolt in place.



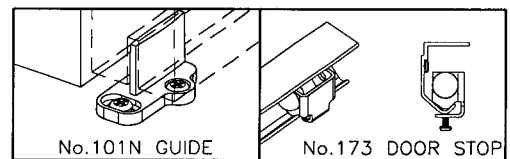
### 3 Fit Track to Wall

When side fitting the track refer to full size section top left and determine the position of the track. When top fitting refer to the half size drawing top middle. Install track securely and level with centre of track in line with the edge of opening. Wipe track clean of shavings.



### 4 Lift Door on to Track

Place the Hanger in the track. Place bolt head and one washer in each slot in hanger. Hand tighten nuts and washers beneath hanger. Adjust bolt to give required door clearances and finally tighten locknuts. Check door slides smoothly and silently.



### 5 Fit Door Guide and Stop

Install the door guide at the edge of the opening jamb. Screw through centre of slotted hole first, adjust guide so door is vertical, then locate by screwing through round hole. Finally fit door stops in track. Position them so rubber buffer stops hanger in fully open and closed positions and tighten locking screws.

B80B